

So Far, The Bulls Are Disappointed In Santa



In this issue of "So Far, The Bulls Are Disappointed In Santa."

- *An Administrative Note*
- *Only Two-Days Left For Santa To Deliver*
- *Portfolio Positioning Update*
- *MacroView: Shades Of 1999 As "Market Mania" Returns*
- *Sector & Market Analysis*
- *401k Plan Manager*

Follow Us On: [Twitter](#), [Facebook](#), [Linked-In](#), [Sound Cloud](#), [Seeking Alpha](#)

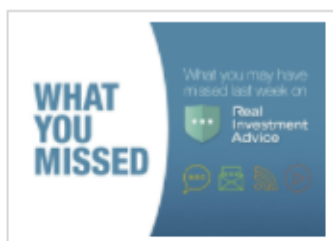
RIA Advisors Can Now Manage Your 401k Plan

Too many choices? Unsure of what funds to select? Need a strategy to protect your retirement plan from a market downturn? [RIA Advisors](#)

now has the capability to manage your 401k plan for you. It's quick, simple, and transparent. In just a few minutes we can get you in the **"right lane"** for retirement.



Catch Up On What You Missed Last Week



#WhatYouMissed On RIA This Week: 12-31-20

Written by Lance Roberts | Jan 1, 2021

Here is what you might have missed from the RIA Crew last week. A compilation of our best blogs, newsletter, podcasts, the daily radio show and commentary from RIAPRO.NET.

[>> Read More](#)

Administrative Note

For many of our loyal readers, 2020 was a very tough year. From family tragedy to job loss, business loss, and financial hardships due to the pandemic and economic shutdowns. I know this from the hundreds of emails I have received over the last 9-months. **As we turn the page on the calendar to embark upon a new year, I want to wish you and your families a safer, happier, healthier, and more prosperous year.** I also want to thank you for your continued readership and support in so many ways. The whole team at RIA Advisors works hard to deliver the information you need to navigate the markets and financial decisions in the years ahead. We value your feedback and are always striving to improve our service to you. In 2021, we are launching a redesigned website, an automated investment service, online financial planning tools, direct 401k account management, and much more. All to help you be more productive and prosperous in meeting your goals. We are excited about all the changes we are making to serve you better. Most of all, **"thank you"** for trusting in us. Happy New Year.

Only Two-Days Left For Santa To Deliver

Today's newsletter will be a short update as not much has changed during this holiday-shortened week. Over the last month, we have discussed why we were positioning portfolios to participate in the traditional year-end *"window dressing"* rally. Such is also known as the *"Santa Claus"* rally. As discussed last week in [**"All I Want For Christmas Is A Bull Market."**](#)

?Whether optimism over a coming new year, holiday spending, traders on vacation, institutions squaring up their books before the holidays?or the holiday spirit?the bottom line is that bulls tend to believe in Santa Claus.? - Ryan Detrick

Santa Claus Rally

How This Seasonally Bullish Period Could Foreshadow The Future

S&P 500 Index Returns

Santa Comes To Town	Santa Goes Back To North Pole	Santa Claus Rally	January	Calendar Year
12/27/1999	1/4/2000	-4.0%	-5.1%	-10.1%
12/22/2000	1/3/2001	5.7%	3.5%	-13.0%
12/24/2001	1/3/2002	1.8%	-1.6%	-23.4%
12/24/2002	1/3/2003	1.2%	-2.7%	26.4%
12/24/2003	1/5/2004	2.4%	1.7%	9.0%
12/27/2004	1/4/2005	-1.8%	-2.5%	3.0%
12/23/2005	1/4/2006	0.4%	2.5%	13.6%
12/22/2006	1/4/2007	0.0%	1.4%	3.5%
12/24/2007	1/3/2008	-2.5%	-6.1%	-38.5%
12/24/2008	1/5/2009	7.4%	-8.6%	23.5%
12/24/2009	1/5/2010	1.4%	-3.7%	12.8%
12/27/2010	1/4/2011	1.1%	2.3%	0.0%
12/23/2011	1/4/2012	1.9%	4.4%	13.4%
12/24/2012	1/3/2013	2.0%	5.0%	29.6%
12/24/2013	1/3/2014	0.2%	-3.6%	11.4%
12/24/2014	1/5/2015	-3.0%	-3.1%	-0.7%
12/24/2015	1/5/2016	-2.3%	-5.1%	9.5%
12/23/2016	1/4/2017	0.4%	1.8%	19.4%
12/22/2017	1/3/2018	1.1%	5.6%	-6.2%
12/24/2018	1/3/2019	1.3%	7.9%	28.9%
12/24/2019	1/3/2020	0.3%	-0.2%	14.4%
12/24/2020	1/5/2021	?	?	?

Source: LPL Research, FactSet 12/22/2020

All indexes are unmanaged and cannot be invested into directly. Past performance is no guarantee of future results.

The Santa Claus Rally is the final 5 trading days of a calendar year and the first two of the following year.

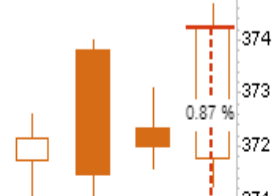
While the statistics suggested that the last week of December should have been a bullish one, it didn't entirely turn out that way. **Okay, let's be honest, it was just a bit disappointing.** Lot's of chopping around all week and a final spurt at the close yesterday. Not exactly confidence-inspiring. As shown in the chart below, the market closed just 0.87% higher than the previous all-time high set mid-month. However, the good news is the last high did hold as support. Such sets up the possibility for "Santa" to "deliver" on the New Year's first two days.

SPY SPDR S&P 500 ETF NYSE

© StockCharts.com

Open: 371.78	Ask:	P/E:	Options: yes	Thursday 31-Dec-2020
High: 374.66	Ask Size:	EPS:	Annual Dividend: 5.69103	▲ +0.61%
Low: 371.23	Bid:	Mkt Cap: 330.5B	Yield: 1.52%	Chg: +2.26
Prev Close: 371.99	Bid Size:	Last Size: 370 shrs	SCTR (ETF): 54.0	Last: 374.25
				Volume: 57,359,504

SPY (Daily) 374.25



Also, another bullish setup is that the short-term technical money-flow signals have gotten a bit oversold. From these levels, it would not be surprising for the market to stage a short-term rally during the first couple of weeks of January. Such was a point I made earlier this week: <https://twitter.com/LanceRoberts/status/1344265440550383616?s=20> It certainly seems as if there is no risk. But maybe that is the risk.



Real Investment Show
with Lance Roberts

Monday to Friday,
from 6 to 7am. [➤ Get it now](#)

Everyone Is On The Same Side Of The Boat

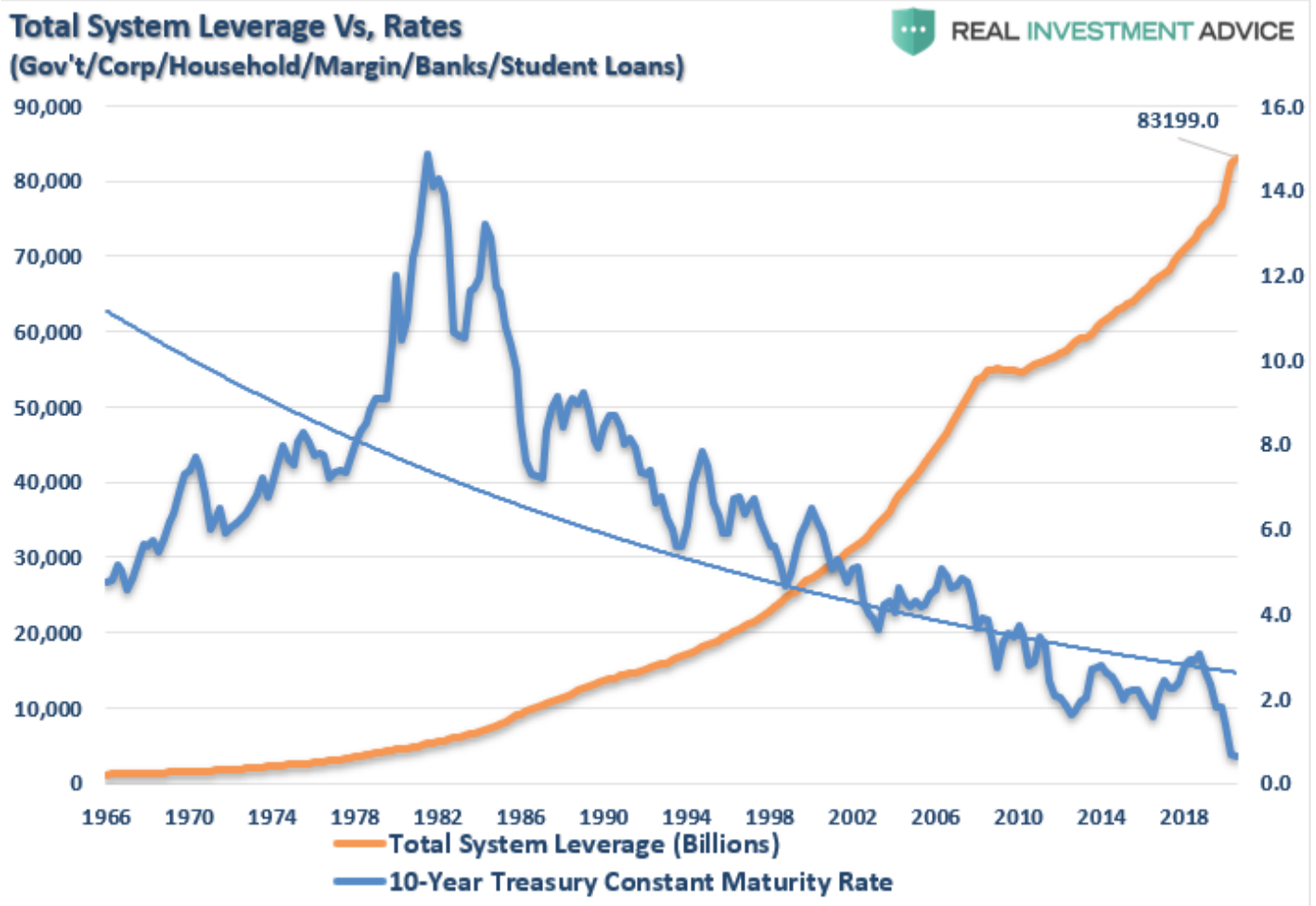
Currently, every single analyst has the same story going into 2021.

- *Prepare for an economic boom.*
- *Interest rates will rise.*
- *Inflation is coming back.*
- *The stock market is going to 4100-4500*
- *Small-caps are the new "new trade."*

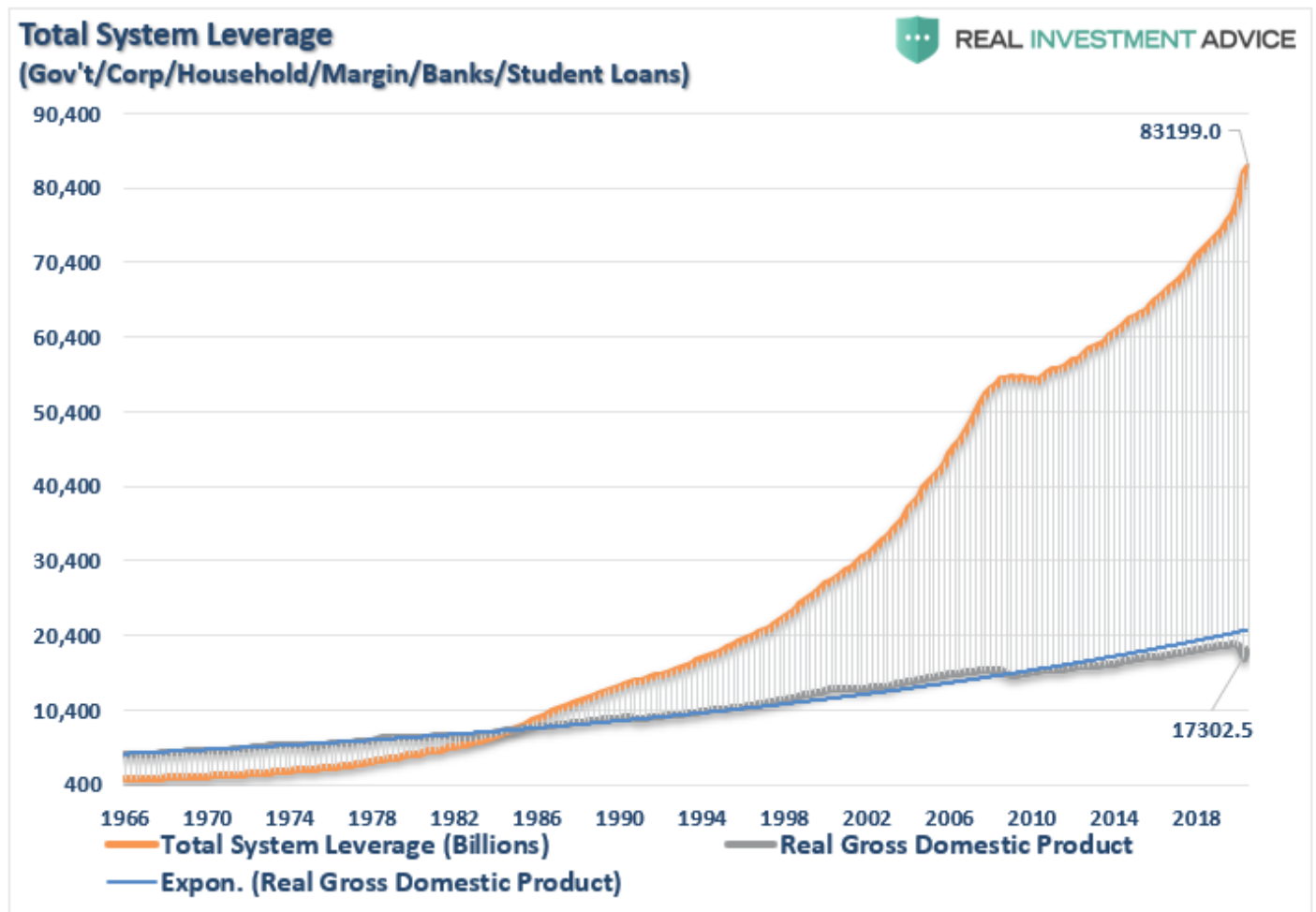
You get the idea. Everyone is incredibly "*bullish*" about the coming year. While that "*wish list*" could undoubtedly turn out to be the case, there is much that could go wrong. More importantly, there is also Bob Farrell's truism, which is:

"When all experts agree, something else tends to happen."

The biggest problem, of course, is the debt. If inflation does indeed rise, interest rates will also increase due to the surge in the money supply. Somewhere between 1-2% on the 10-year Treasury, the proverbial "*wheels*" come off the \$86 Trillion debt "*cart*."



With the gap between economic growth and debt at the highest levels on record, even small increases in debt service costs have an immediate and negative impact on growth.



While analysts may indeed get what they wish for in the first half of 2021, they may well regret it by the second half. **With literally everyone "in the pool" and leveraged, the big surprise in 2021 could very well be the unwinding of over-confidence.**

RIAPro

Get the latest trades, analysis, and insights from the RIA Pro team.

[> Sign up now](#)

What Happens After A Third 10% Year Of Gains?

While working on this week's newsletter, I stumbled across this piece of analysis from [DataTrek Research](#):

"Since 1928 (93 years), there have only been 5-times where markets returned 10% gains for 3 or more years in a row.

- **World War II** (4 years): 1942 (+19%), 1943 (+25%), 1944 (+19%) and 1945 (+36%)
- **Korean War** (4 years): 1949 (+18%), 1950 (+31%), 1951 (+24%) and 1952 (18%)
- **Start of Vietnam War** (3 years): 1963 (+23%), 1964 (+16%), and 1965 (+12%)
- **Late 1990s Bull Market** (5 years): 1995 (37%), 1996 (+23%), 1997 (+33%), 1998 (+28%) and 1999 (+21%)

- **Post-Financial/Greek Debt Crisis** (3 years): 2012 (+16%), 2013 (+32%) and 2014 (14%)

That's the whole list, across almost an entire century of US equity returns. The famous bull market of the 1980s did not see 3 consecutive +10 percent years. Nor did the 1970s, when the S&P 500 rose by 78 percent over that inflationary decade. Even the post-1932 snapback from the Great Depression bottom for US stocks failed to string together 3 years in a row of +10 percent returns in the 1930s."

Could the S&P post another year of 10% gains in 2021? As noted above, this is the "consensus" view currently. Therefore, many things will need to go "**right**," considering the extraordinarily high level of valuations already priced into the market. However, the risk to investors, who are already long and leveraged, is what happens if something goes wrong? What if the vaccine rollout doesn't happen as fast as many expect? Or, economic growth doesn't come roaring back? What if corporate earnings don't rebound as strongly as expected? There are many "What if's." For investors, in a grossly overbought, leveraged, extended, and bullish market, it only takes one "what if" to turn everything into "W.T.F."

Real Investment Report

Market updates, sector analysis, 401k plan manager & more.

> **Subscribe today**

Portfolio Positioning Update

With the "**Santa Claus**" rally wrapping up next week, we are maintaining our long bias with **reduced hedges at the moment**. We made no changes to our portfolio mix during the past week except for adding a 5% weight of SPY to our current holdings. Once we pass the end of the next week, we will most likely reduce that position and rebalance the rest of our holdings. With the stimulus bill passed, and checks going out, we won't be surprised to see a short-term pop in economic activity. However, given the checks are 50% smaller than the first round, along with extended unemployment benefits, the economic bump will be short-lived. The real question going into 2021 is whether President Biden can spend further into debt to do more stimulus. Or, will a shift toward fiscal responsibility begin to take hold? Much will depend on the Senate run-off outcome in Georgia. Regardless, the evidence is mounting that economic and earnings data will likely disappoint overly optimistic projections currently. Furthermore, investors are way too confident. Historically, such has always turned out to be a poor mix for a continued bull market advance in the short-term. We will continue to trade accordingly, but the extreme deviations in all markets from long-term fundamentals are unsustainable. That is a problem the even the Fed can't fix. ***I wish you all a happy and prosperous New Year.***



**REAL
INVESTMENT
ADVICE**

Have more than \$500k invested?
Get a better strategy than
"buy and hold"

**MEET WITH AN
RIA TEAM
MEMBER TODAY**

The MacroView



Shades Of 1999 As "Market Mania" Returns In 2020

Written by Lance Roberts | Dec 28, 2020

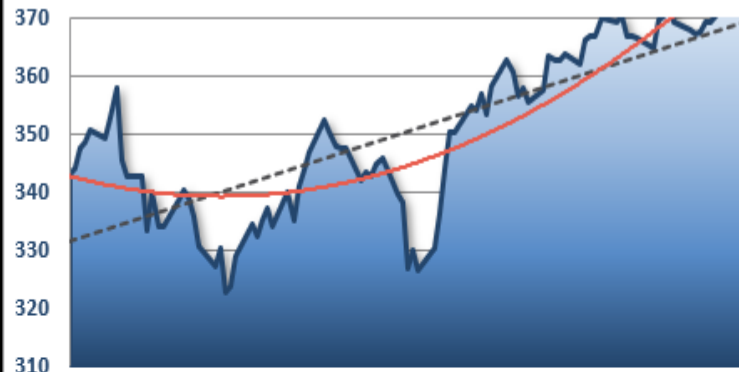
"Maybe this time is different. Those words, supposedly the most dangerous

If you need help or have questions, we are always glad to help. [Just email me.](#) See You Next Week **By Lance Roberts, CIO**

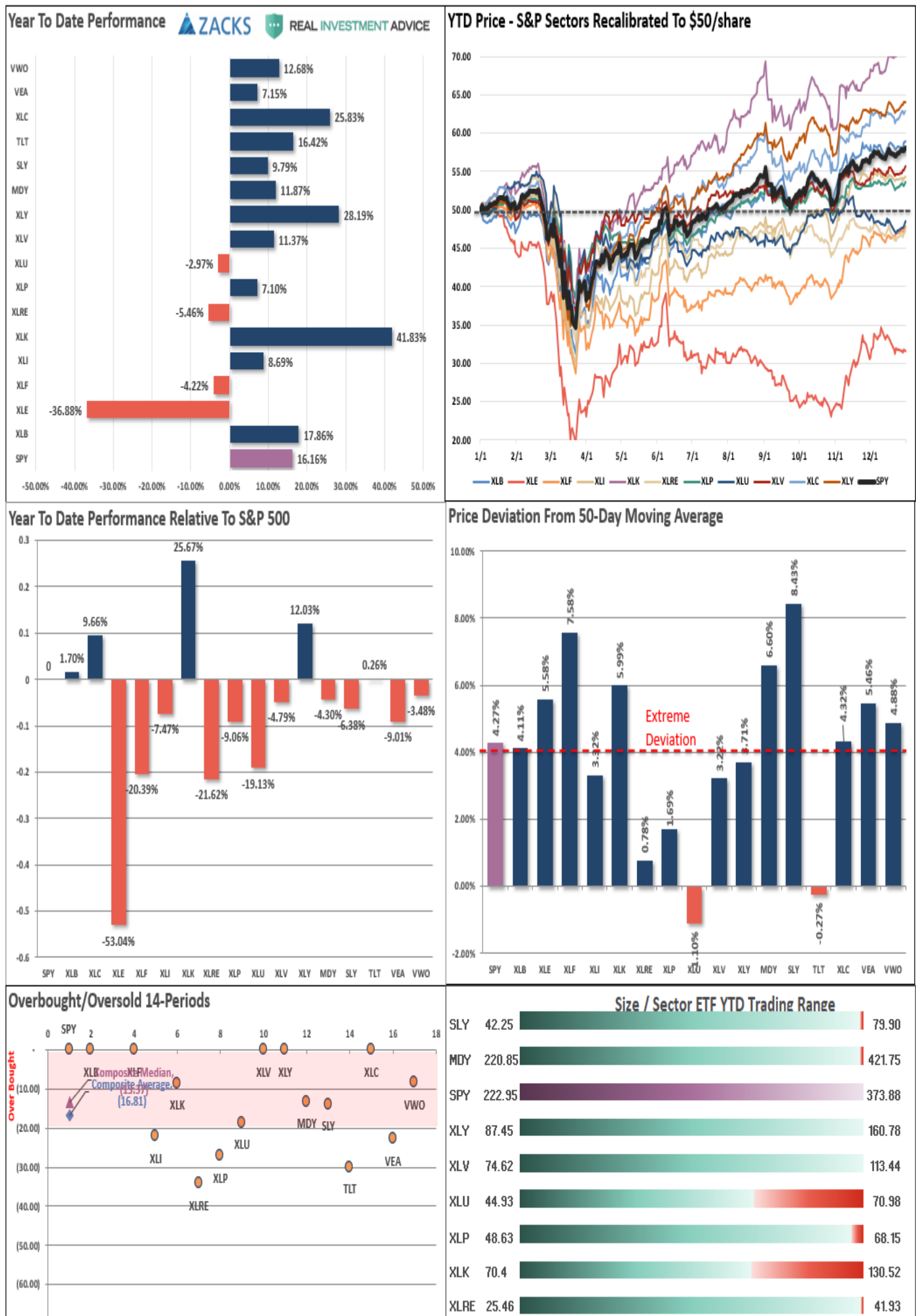
Market & Sector Analysis

Analysis & Stock Screens Exclusively For RIAPro Members

S&P 500 Tear Sheet

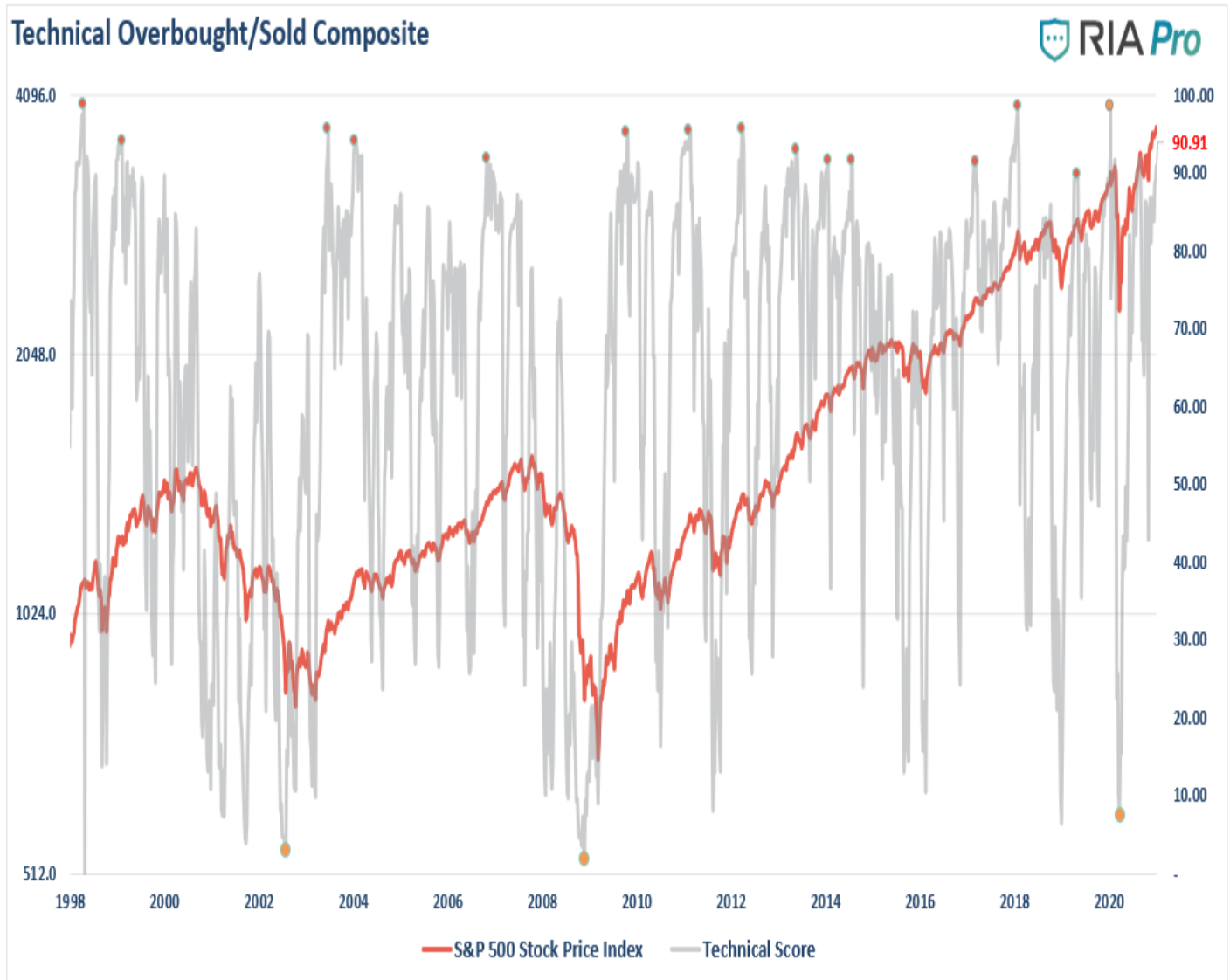
3 Month SPY Price									SPY RISK INFO		ZACKS		REAL INVESTMENT ADVICE	
									Item	T 2-Yr	T 1-Yr.	YTD	% Diff YTD/T1-YR	
									Price Return	49.60%	16.16%	16.16%	0.00%	
									Max Drawdown	-35.63%	-35.63%	0.00%	-100.00%	
									Sharpe	1.09	0.72	0.54	(0.26)	
									Sortino	1.15	0.82	0.60	(0.27)	
									Volatility	25.26	33.46	33.52	0.00	
									Daily VaR-5%	(12.93)	(29.98)	(36.76)	0.23	
									Mnthly VaR-5%	(15.81)	(21.49)	(25.18)	0.17	
S&P 500 Market Cap Analysis														
Item	2 years ago	1 year ago	Current	1 Yr % Change	5 Year High	5 year Low	% From High	% From Low	Item	12-M Ago	Current	% Chg		
Dividend Yield	1.86%	1.75%	1.41%	(24.13%)	2.19%	1.44%	(35.84%)	(1.97%)	Shares	3,171.1	3,026.9	(4.55%)		
P/E Ratio	16.67	20.36	27.59	26.20%	2759%	1606%	0.0%	71.86%	Sales	71,897	69,340	(3.56%)		
P/S Ratio	3.85	4.00	4.83	17.05%	4.65	3.22	3.80%	50.08%	SPS	22.7	22.9	1.04%		
P/B Ratio	5.04	5.45	6.46	15.65%	6.09	3.94	6.08%	63.86%	Earnings	11,442	10,134	(11.44%)		
ROE	21.46%	21.53%	19.72%	(9.17%)	21.99%	17.60%	(10.33%)	12.06%	EPS TTM	4.6	4.0	(12.48%)		
ROA	4.22%	4.21%	3.64%	(15.70%)	4.31%	3.51%	(15.62%)	3.71%	Dividend	1.6	1.5	(3.57%)		
S&P 500 Asset Allocation														
Sector	1 Year Price Return	Weight	Beta	P/E	P/E High- 5yr (Mo.)	P/E Low - 5Yr (Mo.)	P/E % From Peak	ROE	DIV. YIELD	TTM Earnings Yield	Current Forward Earnings	Forward PE		
Energy	(36.96%)	2.28%	1.85	89.54	120.57	11.30	(25.7%)	1.0%	5.6%	1.11%	(0.17)	(199.60)		
Materials	17.60%	2.60%	1.21	27.00	26.40	13.86	2.3%	8.1%	1.9%	3.72%	2.91	26.71		
Industrials	3.13%	8.35%	1.17	34.79	34.44	14.65	1.0%	9.3%	1.5%	2.89%	2.10	42.06		
Discretionary	53.16%	12.78%	1.33	60.67	57.69	21.02	5.2%	16.8%	0.5%	1.65%	2.79	59.64		
Staples	8.37%	6.47%	0.60	22.88	22.83	17.65	0.2%	29.2%	2.5%	4.40%	3.94	22.72		
Health Care	11.57%	13.41%	0.77	18.75	19.47	15.11	(3.7%)	28.9%	1.6%	5.39%	6.61	18.00		
Financials	(3.96%)	10.34%	1.34	17.39	18.48	10.52	(5.9%)	7.5%	1.9%	5.83%	4.18	17.10		
Technology	42.65%	27.74%	1.12	33.84	32.72	14.63	3.4%	52.8%	1.0%	2.96%	4.21	31.87		
Telecom	24.11%	10.83%	0.94	27.70	27.15	17.61	2.0%	15.5%	0.7%	3.64%	5.75	26.86		
Utilities	(3.10%)	2.73%	0.38	19.54	22.09	16.35	(11.5%)	10.7%	3.2%	5.20%	3.25	19.50		
Real Estate	(4.53%)	2.40%	0.96	21.08	21.42	16.94	(1.6%)	7.0%	3.0%	4.81%	3.90	21.82		
Momentum Analysis														
Item	Price	ROC 50-Days	50-DMA	# Days Since Cross	% Dev 50-Day	200-DMA	# Days Since Cross	% Dev 200-Day	% Dev 50-200 DMA	% From 52-W High	% From 52-W Low	Buy/Sell		
Large Cap	373.88	8.49%	358.84	42	4.19%	325.44	134	14.88%	10.26%	(1.21%)	71.30%	Buy		
Mid Cap	419.92	14.98%	394.49	44	6.45%	342.38	70	22.65%	15.22%	(1.27%)	96.02%	Buy		
Small Cap	79.54	20.24%	73.50	44	8.22%	62.46	67	27.35%	17.68%	(1.29%)	95.04%	Buy		

Performance Analysis



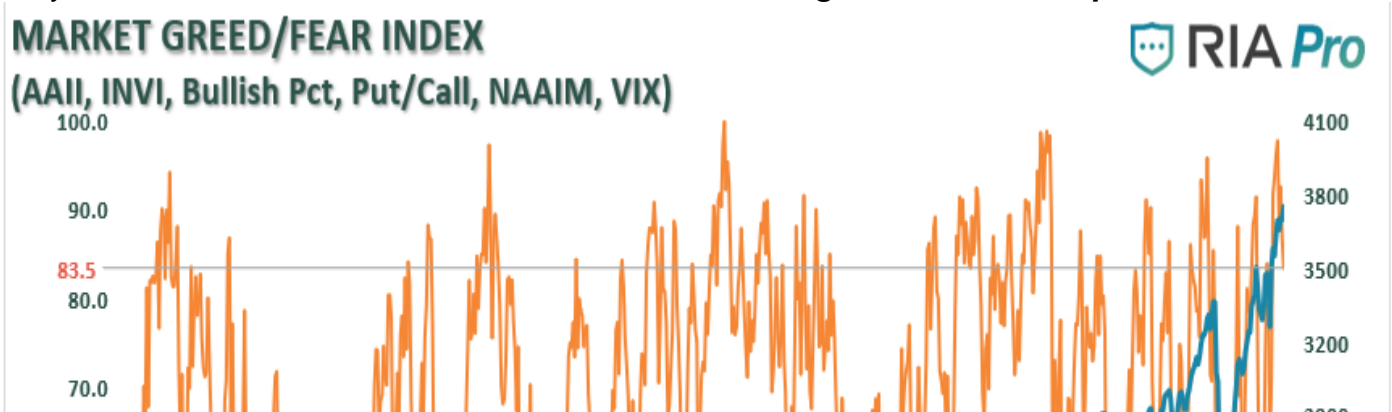
Technical Composite

The technical overbought/sold gauge comprises several price indicators (RSI, Williams %R, etc.), measured using "weekly" closing price data. Readings above "80" are considered overbought, and below "20" is oversold.



Portfolio Positioning "Fear / Greed" Gauge

The "Fear/Greed" gauge is how individual and professional investors are "positioning" themselves in the market based on their equity exposure. From a contrarian position, the higher the allocation to equities, to more likely the market is closer to a correction than not. The gauge uses weekly closing data. NOTE: This week, I published the 4-Week Average of the Fear/Greed Index. It is a rarity that it reaches levels above 90. **The current reading is 96.07 out of a possible 100.**



Sector Model Analysis & Risk Ranges

How To Read.

- The table compares each sector and market to the S&P 500 index on relative performance.
- The "MA XVER" is determined by whether the short-term weekly moving average crosses positively or negatively with the long-term weekly moving average.
- The risk range is a function of the month-end closing price and the "beta" of the sector or market.
- The table shows the price deviation above and below the weekly moving averages.

RELATIVE PERFORMANCE		Current	PERFORMANCE RELATIVE TO S&P 500 INDEX					SHORT	LONG	MONTH	REL S&P	RISK RANGE		% DEV -	% DEV -	M/A XVER
Ticker	ETF NAME	Price	1 Week	4 Week	12 Weeks	24 Weeks	52 Weeks	WMA	WMA	END PRICE	BETA	HIGH	LOW	Short M/A	Long M/A	SIGNAL
IVV	ISHARS-SP500	375.39	1.37	2.00	8.81	16.57	15.04	356.56	335.49	375.39	0.99	384.77	366.01	5%	12%	BULLISH
XLB	SPDR-MATLS SELS	72.39	(0.24)	0.89	0.87	2.79	4.22	68.65	63.02	72.39	1.07	74.97	69.81	5%	15%	BULLISH
XLC	SPDR-COMM SV SS	67.48	0.47	(1.16)	3.71	0.71	9.33	63.75	59.78	67.48	0.99	69.83	65.13	6%	13%	BULLISH
XLE	SPDR-EGY SELS	37.90	(1.95)	(3.63)	12.31	(14.71)	(52.48)	34.68	36.03	37.90	1.73	39.50	36.30	9%	5%	BEARISH
XLF	SPDR-FINL SELS	29.48	0.46	0.97	8.17	5.50	(20.19)	26.86	25.07	29.48	1.20	30.57	28.39	10%	18%	BULLISH
XLK	SPDR-TECH SELS	130.02	(0.63)	2.19	1.03	5.74	24.19	121.98	113.33	130.02	1.06	134.65	125.39	7%	15%	BULLISH
XLI	SPDR-INDU SELS	88.55	(0.75)	(1.56)	1.31	7.16	(8.36)	84.50	76.82	88.55	1.17	91.80	85.30	5%	15%	BULLISH
XLP	SPDR-CONS STPL	67.45	(0.28)	(1.49)	(5.41)	(6.46)	(7.08)	66.13	63.28	67.45	0.59	69.53	65.37	2%	7%	BULLISH
XLRE	SPDR-RE SELS	36.56	0.44	(2.76)	(10.08)	(10.72)	(19.38)	36.29	35.61	36.56	0.70	37.73	35.39	1%	3%	BULLISH
XLU	SPDR-UTIL SELS	62.70	1.06	(2.54)	(10.06)	(10.08)	(16.78)	63.32	60.54	62.70	0.32	64.47	60.93	-1%	4%	BULLISH
XLV	SPDR-HLTH CR	113.44	0.40	(0.12)	(3.18)	(7.97)	(3.96)	109.25	105.65	113.44	0.78	117.17	109.71	4%	7%	BULLISH
XLY	SPDR-CONS DISCR	160.78	0.47	(0.16)	(2.91)	3.00	11.65	154.38	142.62	160.78	1.14	166.62	154.94	4%	13%	BULLISH
XTN	SPDR-SP TRANSP	71.37	(1.41)	(2.72)	7.15	11.59	(5.24)	66.46	59.64	71.37	1.39	74.14	68.60	7%	20%	BULLISH
SDY	SPDR-SP DIV ETF	105.93	(0.63)	(1.24)	(0.38)	(3.30)	(16.31)	101.46	96.14	105.93	0.89	109.53	102.33	4%	10%	BULLISH
RSP	INVS-SP5 EQ ETF	127.54	(0.21)	(0.02)	3.65	4.35	(5.14)	119.29	110.62	127.54	1.12	132.15	122.93	7%	15%	BULLISH
SLY	SPDR-SP6 SC	79.54	(1.60)	3.44	12.36	15.60	(5.34)	71.57	64.58	79.54	1.29	82.55	76.53	11%	23%	BULLISH
MDY	SPDR-SP MC 400	419.92	(1.81)	2.40	6.90	9.43	(3.34)	386.61	353.65	419.92	1.19	435.43	404.41	9%	19%	BULLISH
EEM	ISHARS-EMG MKT	51.67	1.70	0.66	4.70	4.92	(2.17)	48.19	44.37	51.67	0.87	53.41	49.93	7%	16%	BULLISH
EFA	ISHARS-EAFE	72.96	(0.54)	(0.57)	3.14	(1.01)	(11.02)	68.56	64.81	72.96	0.86	75.41	70.51	6%	13%	BULLISH
IAU	ISHARS-GOLD TR	18.13	(0.20)	1.25	(8.54)	(10.85)	9.06	17.88	17.72	18.13	0.02	18.59	17.67	1%	2%	BULLISH
GDX	VANECK-GOLD MNR	36.02	(1.40)	(0.56)	(16.38)	(21.98)	7.69	37.24	37.96	36.02	0.58	37.13	34.91	-3%	-5%	BEARISH
UUP	INVS-DB US\$ BU	24.24	(1.82)	(2.82)	(12.97)	(23.48)	(22.02)	24.85	25.45	24.24	(0.13)	24.82	23.66	-2%	-5%	BEARISH
BOND	PIMCO-TOT RETRN	113.11	(1.33)	(1.55)	(7.60)	(15.73)	(10.39)	112.29	111.86	113.11	0.08	116.03	110.19	1%	1%	BULLISH
TLT	ISHARS-20+YTB	157.73	(1.09)	(1.86)	(10.31)	(22.19)	0.08	158.68	162.34	157.73	(0.27)	161.24	154.22	-1%	-3%	BEARISH
BNDX	VANGD-TTL INT B	58.55	(1.22)	(1.79)	(8.18)	(15.37)	(11.83)	58.40	58.01	58.55	0.03	60.03	57.07	0%	1%	BULLISH
HYG	ISHARS-JBX HYCB	87.30	(1.08)	(1.06)	(5.82)	(11.75)	(16.18)	85.68	84.23	87.30	0.37	89.81	84.79	2%	4%	BULLISH

Weekly Stock Screens

Currently, there are 3-different stock screens for you to review. The first is S&P 500 based companies with a "Growth" focus, the second is a "Value" screen on the entire universe of stocks, and the last are stocks that are "Technically" strong and breaking above their respective 50-dma. We have provided the yield of each security and a Piotroski Score ranking to help you find fundamentally strong companies on each screen. ([For more on the Piotroski Score - read this report.](#))

S&P 500 Growth Screen

Ticker	Company	Current Price	Next 3-5 Yr Est EPS Gr rate	5 yr Hist Sales Gr	Div Yield	P/E using 12 mo EPS	Score
ETSY	Etsy Inc	183.18	29.17	34.77	0.00	101.77	8.00
MTD	Mettler-Toledo	1133.88	12.10	5.59	0.00	47.07	8.00
PG	Procter & Gambl	137.77	7.57	1.54	2.30	25.61	8.00
PKI	Perkinelmer Inc	140.58	19.52	8.24	0.20	24.75	8.00
AVY	Avery Dennison	154.19	6.65	4.28	1.61	23.47	7.00
BLL	Ball Corp	92.86	5.00	8.85	0.65	32.47	7.00
CTLT	Catalent Inc	103.19	18.34	12.58	0.00	50.83	7.00
DVA	Davita Inc	115.50	18.26	-6.66	0.00	15.52	7.00
IDXX	Idexx Labs Inc	496.96	15.83	10.64	0.00	86.58	7.00
IT	Gartner Inc -A	158.55	13.50	17.83	0.00	35.31	7.00
KLAC	Kla Corp	260.15	11.56	17.02	1.38	23.89	7.00
MRK	Merck & Co Inc	80.59	7.16	4.63	3.23	13.97	7.00
MXIM	Maxim Intg Pdts	87.52	10.00	0.36	2.19	35.43	7.00
NTAP	Netapp Inc	65.33	11.90	0.64	2.94	18.88	7.00
NVDA	Nvidia Corp	525.83	18.26	22.00	0.12	74.06	7.00
QRVO	Qorvo Inc	167.37	15.77	4.66	0.00	24.98	7.00
TGT	Target Corp	173.88	8.49	3.79	1.56	20.58	7.00
UPS	Utd Parcel Srvc	166.23	7.90	6.91	2.43	21.67	7.00
APH	Amphenol Corp-A	129.84	9.92	9.76	0.89	36.17	6.00
AVGO	Broadcom Inc	434.83	12.86	22.60	3.31	23.48	6.00
BAC	Bank Of Amer Cp	29.98	7.00	4.74	2.40	14.84	6.00
BLK	Blackrock Inc	708.94	9.15	8.02	2.05	22.15	6.00
CBRE	Cbre Group Inc	62.40	11.00	21.04	0.00	19.81	6.00
CDW	Cdw Corp	130.00	13.10	7.83	1.23	20.57	6.00
CPRT	Copart Inc	126.54	13.00	16.02	0.00	46.69	6.00
DE	Deere & Co	266.15	16.04	9.48	1.14	30.59	6.00
DOV	Dover Corp	124.43	11.50	0.15	1.59	21.98	6.00
DTE	Dte Energy Co	119.66	5.67	5.61	3.63	16.74	6.00
JPM	Jpmorgan Chase	125.36	5.00	9.75	2.87	16.39	6.00
MS	Morgan Stanley	67.84	6.51	10.02	2.06	11.66	6.00
PKG	Packaging Corp	137.47	5.00	5.17	2.91	22.32	6.00
ROK	Rockwell Automt	249.10	9.30	2.64	1.72	32.44	6.00
RSG	Republic Svcs	95.71	9.40	2.71	1.78	27.42	6.00
TMUS	T-Mobile Us Inc	133.28	18.58	9.99	0.00	34.35	6.00
TSCO	Tractor Supply	142.76	11.72	8.83	1.12	22.17	6.00
TYL	Tyler Tech Inc	428.93	15.00	13.66	0.00	101.16	6.00
URI	Utd Rentals Inc	230.06	6.63	13.34	0.00	12.76	6.00
FFIV	F5 Networks Inc	175.66	11.09	4.00	0.00	26.26	5.00
MU	Micron Tech	71.92	12.33	14.58	0.00	28.09	5.00
NUE	Nucor Corp	52.94	12.00	9.43	3.06	21.18	5.00

Low P/B, High-Value Score, High Dividend Screen

Ticker	Company	Current Price	Price/ Book	ROE 5 Yr Avg	Div Yield	Score
SJM	Smucker Jm	114.72	1.54	11.99	3.14	9
CMTV	Commnty Bcp Vt	14.50	1.04	12.34	5.24	8
FLIC	First Long Is	17.82	1.07	10.79	4.26	8
IBCP	Indep Bk Mich	18.40	1.08	11.07	4.35	8
PEG	Public Sv Entrp	57.36	1.83	11.16	3.42	8
TFC	Truist Finl Cp	47.37	1.03	10.08	3.80	8
TSLX	Sixth St Spclty	20.68	1.23	12.32	7.93	8
UGI	Ugi Corp	34.44	1.73	11.03	3.83	8
BSRR	Sierra Bancorp	23.62	1.07	10.41	3.39	7
CFR	Cullen Frost Bk	87.27	1.34	11.21	3.30	7
CHCO	City Hldgs Co	69.35	1.61	13.27	3.29	7
CPF	Central Pac Fin	18.90	0.98	10.07	4.87	7
CRWS	Crown Crafts	7.24	1.63	13.97	4.42	7
CZFS	Citizens Fin Sv	56.00	1.16	11.82	3.29	7
FMNB	Farmers Natl Bc	13.15	1.09	10.99	3.35	7
FNLC	First Bancp Inc	25.24	1.26	11.41	4.91	7
KBAL	Kimball Intl B	11.99	1.79	20.16	3.00	7
LARK	Landmark Bcp	22.47	0.89	10.11	3.39	7
LOMA	Loma Negra Cia	6.29	1.44	21.99	4.04	7
LTC	Ltc Properties	38.68	1.95	13.30	5.89	7
SWM	Schweitzer-Maud	39.99	1.99	19.52	4.40	7
UBFO	United Sec Bcsh	7.13	1.03	10.41	6.17	7
WTBA	West Bancorp	19.20	1.47	14.69	4.38	7

Aggressive Growth Strategy

Ticker	Company	Current Price	Next 3-5 Yr Est EPS Gr rate	5 yr Hist Sales Gr	Div Yield	P/E F1/ LT EPS Gr	Score
ETSY	Etsy Inc	183.18	29.17	34.77	-	2.72	8
MSCI	Msci Inc-A	436.99	#N/A	10.18	0.71	#N/A	8
TSLA	Tesla Inc	694.78	32.90	55.05	-	20.67	8
VRTX	Vertex Pharm	232.68	20.60	36.98	-	1.24	8
FFIN	First Fin Bk-Tx	36.05	#N/A	10.70	1.44	#N/A	7
IDXX	Idexx Labs Inc	496.96	15.83	10.64	-	5.12	7
MXIM	Maxim Intg Pdts	87.52	10.00	0.36	2.19	3.10	7
NVDA	Nvidia Corp	525.83	18.26	22.00	0.12	3.76	7
QLYS	Qualys Inc	119.73	#N/A	17.75	-	#N/A	7
CPRT	Copart Inc	126.54	13.00	16.02	-	3.14	6
HALO	Halozyne Thera	42.59	#N/A	6.59	-	#N/A	6
IPGP	Ipg Photonics	224.29	#N/A	7.85	-	#N/A	6
RGEN	Repligen	189.14	30.00	35.13	-	4.38	6
TYL	Tyler Tech Inc	428.93	15.00	13.66	-	6.91	6
RAMP	Liveramp Hldgs	73.51	#N/A	(21.10)	-	#N/A	5
EXPO	Exponent Inc	89.30	#N/A	7.57	0.85	#N/A	5
IIPR	Innov Indl Ppty	183.68	#N/A	172.75	2.70	#N/A	5
EXR	Extra Space Stg	114.71	3.11	10.88	3.14	7.24	4
FCPT	Four Cornrs Ppt	30.05	#N/A	22.72	4.06	#N/A	4
TREX	Trex Company	83.79	#N/A	14.86	-	#N/A	4

Portfolio / Client Update

That's a wrap. It's done. Stick a fork in it. Whatever is your favorite saying, the year 2020 is finally over. The best part about 2020 is it won't take much for 2021 to be a better year. As we wrap up the year, we have positioned portfolios to take advantage of any bull market continuation. However, we know the potential risks of excess valuations, speculative risk-taking, and a leveraged market. Therefore, we expect to continue managing risk in 2021 to maintain portfolio performance while reducing volatility and maintaining capital preservation. We have also done extensive work over the last several months modifying our models to absorb the new dynamic of direct stimulus to households. While such may seem to be beneficial in the short-term, the long-run effect of pulling forward consumption has always been negative. However, between now and then, we will continue to position portfolios to participate in the market. Our focus remains to create returns consistent with your required "*hurdle rate*" to meet your long-term financial objectives. Importantly, we look forward to continuing to serve you in the year ahead. We encourage you to reach out with any questions or concerns you have.

Portfolio Changes

During the past week, we made minor changes to portfolios. We post all trades in real-time at [RIAPRO.NET](https://riapro.net). In anticipation of the seasonally strong period from Christmas to the first two days of January, we added some additional exposure to portfolios.

Increased our S&P Index trade for the year-end ?window dressing? run in both models.

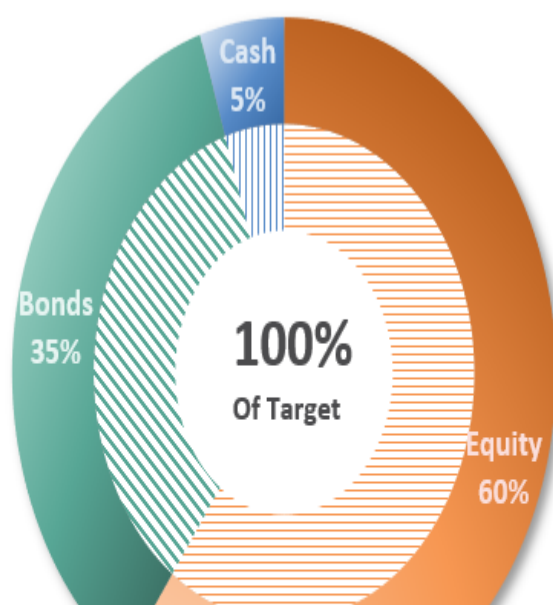
- *Add 5% SPY bringing total position to 10%.*

As always, we are aware of the risks and are carrying tight stops on this position. Our short-term concern remains the protection of your portfolio. We have now shifted our focus to 2021 and where markets go in the New Year. *Lance Roberts CIO*

THE REAL 401k PLAN MANAGER

A Conservative Strategy For Long-Term Investors

Current Portfolio Weighting



Current 401k Allocation Model

5.00% Cash + All Future Contributions

Primary concern is the protection of investment capital

Examples: Stable Value, Money Market, Retirement Reserves

35.00% Fixed Income (Bonds)

Bond Funds reflect the direction of interest rates

Examples: Short Duration, Total Return and Real Return Funds

60.00% Equity (Stocks)

The vast majority of funds track an index.

Therefore, select on ONE fund from each category.

Keep it Simple.

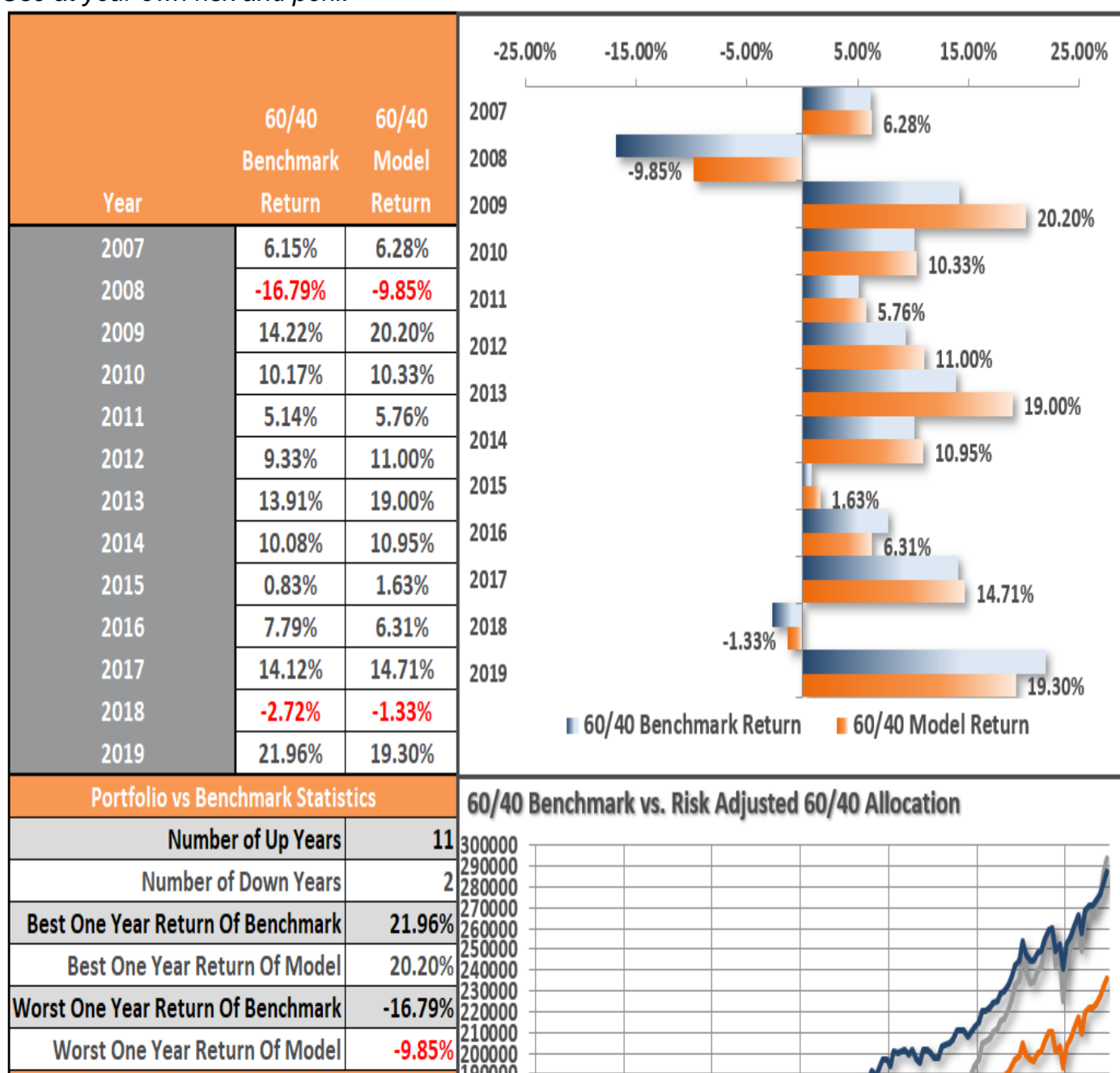
20% Equity Income, Balanced or Conservative Allocation

[RIA Advisors](#) now has the capability to manage your 401k plan for you. It's quick, simple, and transparent. In just a few minutes we can get you in the **"right lane"** for retirement.



Tired Of Trying To Self-Manage Your 401k
Let RIA Advisors Do It For You
Just Click Here To Take Control Of Your Retirement Today!

Model performance is a two-asset model of stocks and bonds relative to the weighting changes made each week in the newsletter. Such is strictly for informational and educational purposes only, and one should not rely on it for any reason. Past performance is not a guarantee of future results. Use at your own risk and peril.



401k Plan Manager Live Model

As an [RIA PRO subscriber](#) (You get your first 30-days free), you can access our live 401k plan manager. Compare your current 401k allocation to our recommendation for your company-specific plan and our 401k model allocation. You can also track performance, estimate future values based on your savings and expected returns, and dig down into your sector and market allocations. **If you would like to offer our service to your employees at a deeply discounted corporate rate, [please contact me](#).**

RIAPro

Investment Analysis, Research & Data
From The RIA Investment Team

Dashboard

Macro

Ideas

Research

Portfolio

401K - Beta

Symbol

Help

This is the Beta version of 401K. Some Errors are expected ! Click Here to report Issues

My Portfolios

CVS Health

Enter Portfolio Name

Add Portfolio

Delete Portfolio

Rename Portfolio

My Info

Fund Selection

Comparison

Summary

Commentary

My Portfolio

RIAPro Portfolio

RIA PRO MODEL PL

Retirement Income (My Portfolio Annual ROR 9.44 %)

Current account balance	10,000
Estimated Retirement Balance	632,861
Estimated Retirement Balance (Inflation Adj)	620,204
Monthly Income	2,768
Monthly Income (Inflation Adj)	2,713
My Cumulative Contribution	172,934
Employer Cumulative Contribution	103,760

Retirement Income (RiaPro Annual ROR 9.02 %)

Current account balance	10,000
Estimated Retirement Balance	609,786
Estimated Retirement Balance (Inflation Adj)	597,590
Monthly Income	2,667
Monthly Income (Inflation Adj)	2,614
My Cumulative Contribution	172,934
Employer Cumulative Contribution	103,760

My Fund Composition

RIAPro Fund Composition

My Asset Composition

RIAPro Asset Composition