



Each week we produce a chart book of 5 to 10 stocks which have hit our watch list for potential additions to our long-short equity trading portfolio.

We have broken down the list into two sections - Long and Short and have provided targets for potential actions.

Importantly, these equities are not part of our long-term investment themes and are for trading purposes only. We may, or may not, implement any of the ideas on this list. They are simply for consideration.

Also, it is entirely possible that our long-term themed equity model could be long a position which could show up on the "*short-idea*" list temporarily. Trading and investing, while having many commonalities, are different based on time frames and objectives and are not always handled exactly the same.

HOW TO READ THE CHARTS

There are four primary components to each chart:

- *The price chart is contained within the shaded area which represents 2-standard deviations above and below the short-term moving average.*
- *The Over Bought/Over Sold indicator is in orange at the top.*
- *The Support/Resistance line (green) is the longer-term moving average which also acts as a trailing stop in many cases.*
- *The Buy / Sell is triggered when the green line is above the red line (Buy) or vice-versa (Sell).*



LONG CANDIDATES

ABT--•Abbott•Laboratories



- Stock has held the long-term moving average as support and is currently pushing toward new highs.
- Short-term positioning: Bullish
 - Currently long 1/2 position in Equity portfolio
 - Add to position on breakout to new highs.
 - Stop-loss is at \$70

CHDN--Churchill Downs

CHDN Churchill Downs, Inc. Nasdaq GS

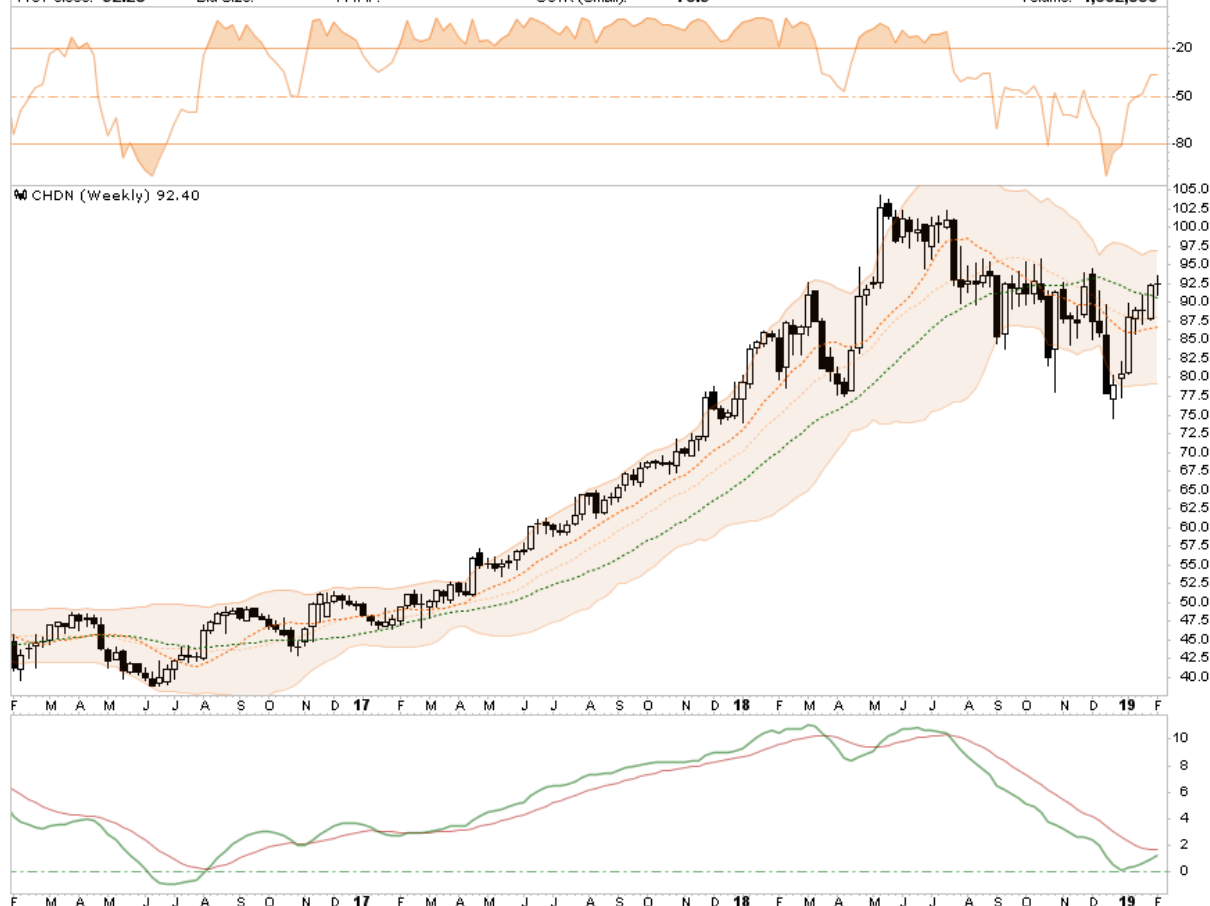
© StockCharts.com

Consumer Discretionary / Gambling

Wednesday 6-Feb-2019

Open: 92.53	Ask:	P/E: 18.36	Options: yes
High: 93.67	Ask Size:	EPS: 5.03	Annual Dividend: 0.5433
Low: 91.00	Bid:	Last Size: 292 shrs	Yield: 0.59%
Prev Close: 92.28	Bid Size:	VWAP:	SCTR (Small): 75.9

▲ **+0.13%**
 Chg: **+0.12**
 Last: **92.40**
 Volume: **1,002,550**



- *Broke out of downtrend from all-time highs.*
- *Close to triggering a weekly buy signal*
- *Short-Term Positioning: Bullish*
 - *Buy at current levels*
 - *Trade target is \$102.50*
 - *Stop-loss is currently \$87.50*

GOOG Google

GOOG Alphabet Inc. - Class C Nasdaq GS

© StockCharts.com

Communication Services / Internet

Wednesday 6-Feb-2019

Open: 1112.66	Ask:	P/E: 41.96	Options: yes
High: 1147.00	Ask Size:	EPS: 26.58	Annual Dividend: N/A
Low: 1109.02	Bid:	Last Size:	Yield: N/A
Prev Close: 1110.75	Bid Size:	VWAP:	SCTR (Large): 36.5

▲ +0.40%
Chg: +4.48
Last: 1115.23
Volume: 8,230,444



- *GOOG looking to break above resistance at the 200-dma.*
- *Close to triggering a weekly "buy" signal.*
- *Short-Term Positioning: Bullish*
 - *Buy on breakout above resistance @ \$1125*
 - *Stop-loss is currently \$1100*

HD - Home Depot

HD Home Depot, Inc. NYSE

Consumer Discretionary / Home Improvement Retailers

Open: **184.30** Ask: P/E: **20.17** Options: **yes**
 High: **186.99** Ask Size: EPS: **9.16** Annual Dividend: **4.12**
 Low: **183.84** Bid: Last Size: **2.23%** Yield: **2.23%**
 Prev Close: **184.37** Bid Size: VWAP: SCTR (Large): **44.4**

© StockCharts.com

Wednesday 6-Feb-2019

▲ **+0.19%**
 Chg: **+0.35**
 Last: **184.72**
 Volume: **10,257,228**



- HD close to breakout above 200-dma
- Also, close to registering a weekly "buy signal."
- Short-Term Positioning: Bullish
 - Buy on "breakout" above \$187.50
 - Stop-loss is tight at \$182.50 after "buy"

STX - Seagate Technology

STX Seagate Technology Holdings, Inc. Nasdaq GS

© StockCharts.com

Technology / Computer Hardware

Wednesday 6-Feb-2019

Open: **44.99** Ask: P/E: **9.10** Options: **yes**
 High: **46.44** Ask Size: EPS: **4.97** Annual Dividend: **2.52**
 Low: **43.36** Bid: Last Size: **5.57%** Yield: **5.57%**
 Prev Close: **45.26** Bid Size: VWAP: SCTR (Large): **41.2**

Chg: **-0.03**
 Last: **45.23**
 Volume: **22,441,616**



- STX is attempting to break above resistance at the 200-dma.
- Also, close to triggering a "buy" signal.
- Short-Term Positioning: Bullish
 - Buy on breakout above \$47
 - Stop-loss is currently \$45 after "buy"

SHORT CANDIDATES

TTWO - Take Two Interactive

TTWO Take-Two Interactive Software, Inc. Nasdaq GS

@ StockCharts.com

Communication Services / Internet

Wednesday 6-Feb-2019

Open: 105.91	Ask:	P/E: 50.84	Options: yes	Chg: -11.83%
High: 109.00	Ask Size:	EPS: 1.82	Annual Dividend: N/A	Chg: -12.42
Low: 91.49	Bid:	Last Size:	Yield: N/A	Last: 92.53
Prev Close: 104.95	Bid Size:	VWAP:	SCTR (Large): 1.4	Volume: 24,211,178



- TTWO missed earnings and broke through important support.
- Previous recommendation was to short at previous levels with a stop-loss at \$110
- Recommendation is to take profits in 1/3rd of position.
 - Hold remaining 2/3rds of short-position
 - Move stop-loss down to \$100

AVT••Avnet•Inc.

AVT Avnet, Inc. Nasdaq GS

Technology / Electrical Components

Open: **41.47** Ask: P/E: **-37.55** Options: **yes**
 High: **42.75** Ask Size: EPS: **-1.14** Annual Dividend: **0.78**
 Low: **41.17** Bid: Last Size: Yield: **1.83%**
 Prev Close: **41.48** Bid Size: VWAP: SCTR (Mid): **62.2**

© StockCharts.com

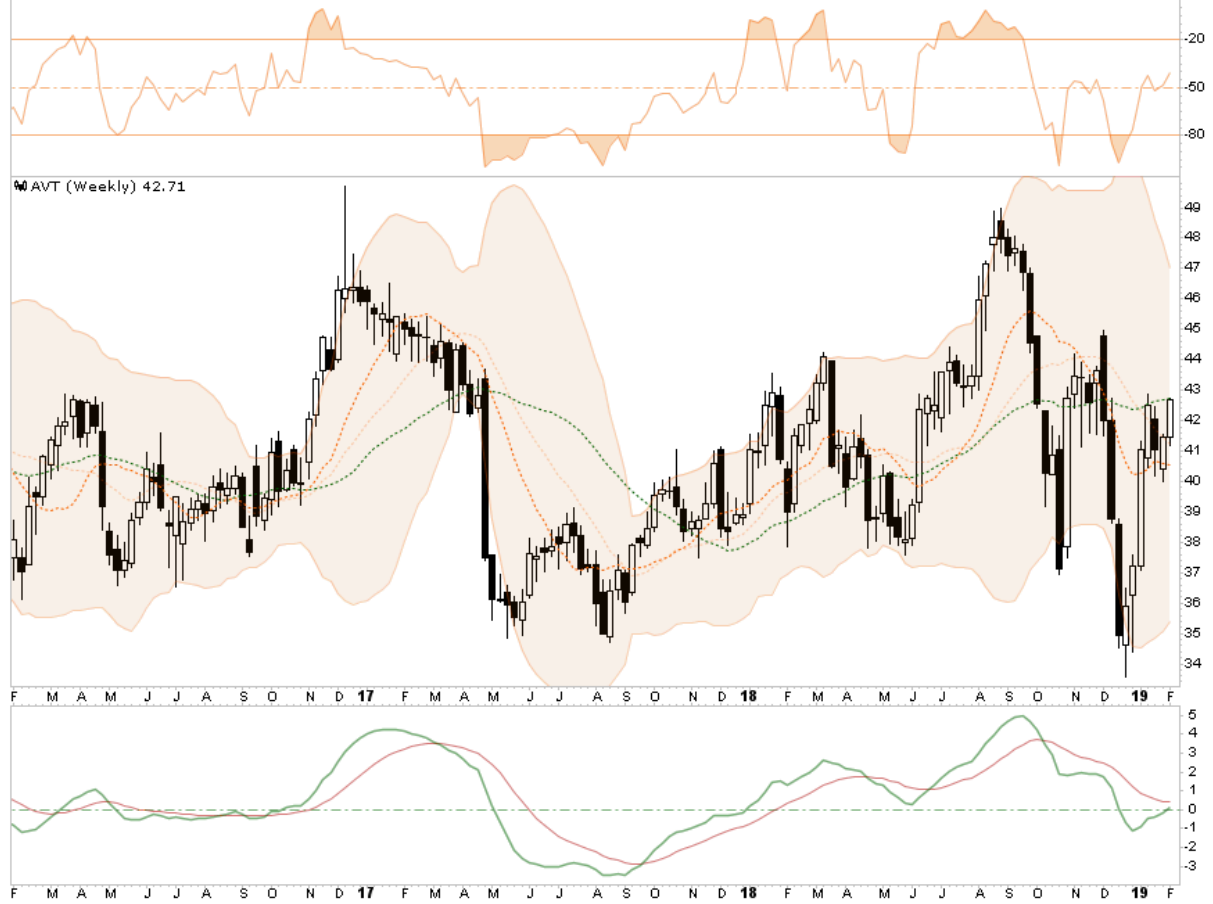
Wednesday 6-Feb-2019

▲ **+2.97%**

Chg: **+1.23**

Last: **42.71**

Volume: **1,977,274**



- Avnet has rallied within a downtrend and is running into resistance.
- Sell-signal still in place but improving which is keeping stop-loss tight.
- Short-Term Positioning: Bearish
 - Short at current levels.
 - Stop-loss is currently \$43

CPB--Campbell's Soup

CPB Campbell Soup Co. NYSE

Consumer Staples / Food Products

© StockCharts.com

Open: 35.02	Ask:	P/E: 57.71	Options: yes
High: 35.30	Ask Size:	EPS: 0.59	Annual Dividend: 1.4
Low: 34.17	Bid:	Last Size:	Yield: 4.09%
Prev Close: 35.01	Bid Size:	VWAP:	SCTR (Large): 8.5

Wednesday 6-Feb-2019

▼ -2.34%
Chg: -0.82
Last: 34.19
Volume: 7,486,241



- CPB is threatening to break important support in a longterm downtrend
- A weekly "sell" signal has been registered.
- Short-Term Positioning: Bearish
 - Short at current levels.
 - Stop-loss is currently \$36

GPS Gap, Inc.

GPS Gap, Inc. NYSE

Consumer Discretionary / Apparel Retailers

Open: **24.93** Ask: P/E: **10.33** Options: **yes**
 High: **25.42** Ask Size: EPS: **2.39** Annual Dividend: **0.97**
 Low: **24.40** Bid: Last Size: Yield: **3.93%**
 Prev Close: **25.00** Bid Size: VWAP: SCTR (Large): **6.5**

© StockCharts.com

Wednesday 6-Feb-2019

▼ **-1.24%**
 Chg: **-0.31**
 Last: **24.69**
 Volume: **9,060,283**



- GPS remains on a "sell signal" in a protracted downtrend.
- Short-Term Positioning: Bearish
 - Short at current levels.
 - Stop-loss is currently \$26

EQT--EQT Corp.

EQT EQT Corp. NYSE

Energy / Exploration & Production

 Open: **19.53** Ask: P/E: **-77.83**
 High: **20.00** Ask Size: EPS: **-0.24**
 Low: **18.51** Bid: Last Size: Yield: **0.42%**
 Prev Close: **19.66** Bid Size: VWAP: SCTR (Large): **1.2**

 Options: **yes**
 Annual Dividend: **0.0789**
 Yield: **0.42%**
 SCTR (Large): **1.2**

© StockCharts.com

Wednesday 6-Feb-2019

 Chg: **-4.98%**
 Last: **18.68**
 Volume: **10,379,361**


- Recent rally failed in downtrend.
- EQT is oversold but the overall bearish trend is firmly intact.
- Short-term positioning: Bearish
 - Short at current levels
 - Add to short at failed rally at @22
 - Stop-loss is currently \$24.