



- **Market Stalls At Resistance**
- **Daily, Weekly, Monthly View**
- **Actions Taken**
- **Sector & Market Analysis**
- **401k Plan Manager**

Follow Us On: [Twitter](#), [Facebook](#), [Linked-In](#), [Sound Cloud](#), [Seeking Alpha](#)



**REAL
INVESTMENT
ADVICE**

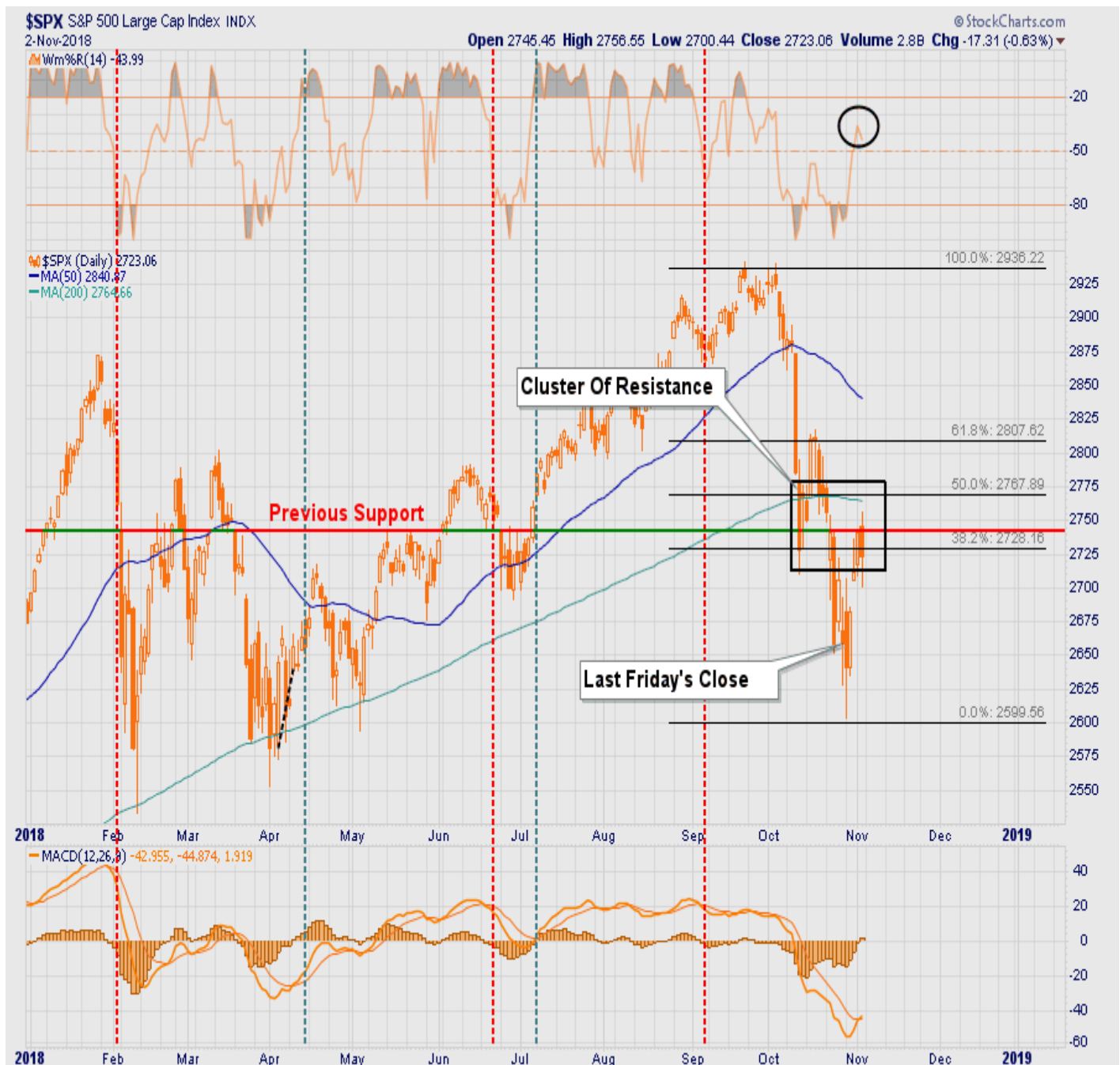
Are you ready to step
up your investment game
with the RIA Team?

CLICK HERE TO SCHEDULE YOUR
FREE PORTFOLIO CONSULTATION

Market Stalls At Resistance

This past Tuesday, I wrote ["A Sellable Rally"](#) in which I laid out the 4-reasons for a rally based on the psychological, fundamental, technical, and seasonal underpinnings. That rally came to fruition over the last few days. For us, it has been the technical backdrop which remains the most compelling. To wit:

"Unlike the February lows, the recent sell-off fell 4-standard deviations below the 50-dma which is a rare event historically speaking. Such deviations do not last long as such an extreme move away from the average price tend to be corrected in fairly short order."



As shown, the combination of both the extreme oversold and deviated conditions contributed to a bounce which hit our **"target neighborhood"** of 2740-2750 on Friday morning. In accordance with our portfolio management strategy, when the markets reached our target zone yesterday morning we executed sells of positions that have been under-performing both the market and other holdings within our portfolios. As we have stated many times previously, one of the

primary tenants of portfolio management is to "sell losers."

"Only losers, add to losers." • Paul Tudor Jones

With portfolios reduced to 50% equity, we have a bit of breathing room to watch the elections next week. There is more than a decent chance the currently Republican-controlled House of Representatives switches to Democratic control which would likely lead to further market volatility. However, [Kevin Giddis from Raymond James](#)•laid out three likely scenarios last week.

*"What could a potential change do for bonds and stocks? There are many possible scenarios, so the devil is in the details. I will lay out a couple of them for you: 1) **The Republicans could lose the House, or the House and Senate.** Either of these possibilities could derail the President's agenda, leading us back to a period of gridlock that has plagued this country in the past. **This would likely be good for bond prices and bad for equity prices.** 2) **The Republican majority remains intact,** and the President pushes forward his plans of another tax cut, among other items as well. **This would likely be good for stocks and bad for bond prices.** 3) **A complete rout that not only gives the majority of both the House and the Senate,** it gives them the power and the votes to take on the President. If this happens, **bonds could rally in price, the economy could lose its momentum, and the Fed would likely alter its monetary policy.** In the end, however, this turns out, the markets are likely poised for some big changes come next Wednesday."*

He is right. More importantly, there are simply too many possible outcomes to head into the election without some extra cash on hand. That cash will either act as a hedge against a decline or will provide liquidity to add some discounted equity exposure where needed. **On a more bullish note, once we get past the election next week, we do start to deal with the "seasonal" bias that comes with the end of the year.** As Stocktraders Almanac noted last week:

"This past midterm-year October that ended yesterday finished well below expectations and historical averages. DJIA declined 5.1%, S&P 500 dropped 6.9% and NASDAQ was off 9.2%. October's losses were the seventh worst decline for DJIA since 1950, fourth worst for S&P 500 and fifth worst for NASDAQ since 1971. Historically, November and December market performance did hold up following a negative October."

Market Performance Following a Down October											
DJIA				S&P 500				NASDAQ			
Year	Oct	Nov	Dec	Year	Oct	Nov	Dec	Year	Oct	Nov	Dec
1950	-0.6	1.2	3.4	1951	-1.4	-0.3	3.9	1971	-3.6	-1.1	9.8
1951	-3.2	-0.4	3.0	1952	-0.1	4.6	3.5	1973	-0.9	-15.1	-1.4
1952	-0.5	5.4	2.9	1954	-1.9	8.1	5.1	1976	-1.0	0.9	7.4
1954	-2.3	9.8	4.6	1955	-3.0	7.5	-0.1	1977	-3.3	5.8	1.8
1955	-2.5	6.2	1.1	1957	-3.2	1.6	-4.1	1978	-16.4	3.2	2.9
1957	-3.3	2.0	-3.2	1960	-0.2	4.0	4.6	1979	-9.6	6.4	4.8
1964	-0.3	0.3	-0.1	1967	-2.9	0.1	2.6	1983	-7.4	4.1	-2.5
1967	-5.1	-0.4	3.3	1970	-1.1	4.7	5.7	1984	-1.2	-1.8	2.0
1970	-0.7	5.1	5.6	1971	-4.2	-0.3	8.6	1987	-27.2	-5.6	8.3
1971	-5.4	-0.9	7.1	1973	-0.1	-11.4	1.7	1988	-1.4	-2.9	2.7
1976	-2.6	-1.8	6.1	1976	-2.2	-0.8	5.2	1989	-3.7	0.1	-0.3
1977	-3.4	1.4	0.2	1977	-4.3	2.7	0.3	1990	-4.3	8.9	4.1
1978	-8.5	0.8	0.7	1978	-9.2	1.7	1.5	1995	-0.7	2.2	-0.7
1979	-7.2	0.8	2.0	1979	-6.9	4.3	1.7	1996	-0.4	5.8	-0.1
1980	-0.9	7.4	-3.0	1983	-1.5	1.7	-0.9	1997	-5.5	0.4	-1.9
1983	-0.6	4.1	-1.4	1984	-0.01	-1.5	2.2	2000	-8.3	-22.9	-4.9

•"The S&P 500 in November had a modestly weaker average performance following a down October, but December was notably stronger."

Importantly, it should be noted that while the markets do tend to improve in November and December, following the 7% decline in October, **an average gain of 3-3.5% does not get you back to even.** It is this seasonally positive bias that keeps us from a more restrictive equity allocation currently. **However, it is our intention to use seasonal strength to reposition portfolios for a much weaker market environment going into 2019 as the bull market officially comes to its end.**•

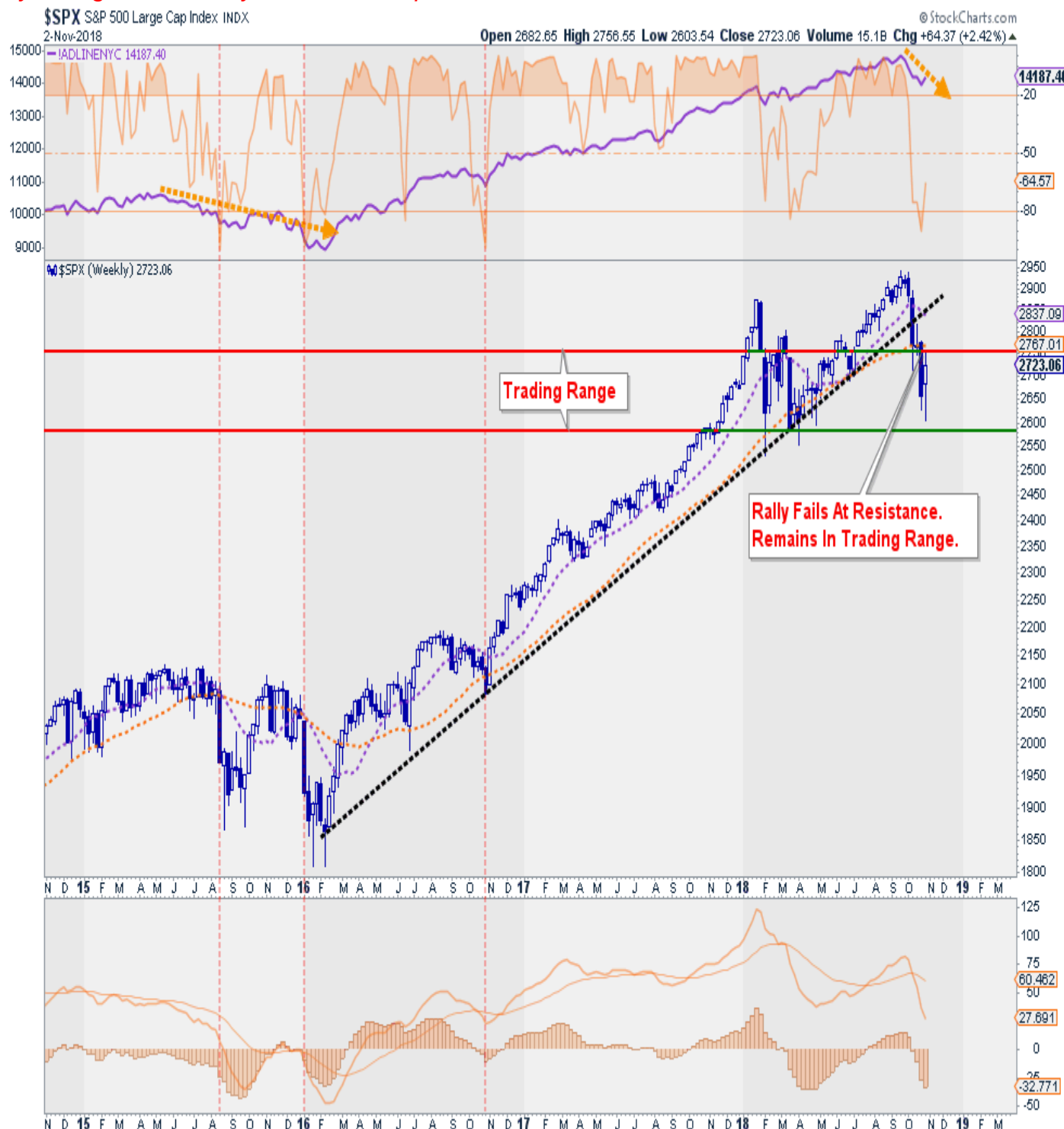
Daily View

After violations of several important levels of support last month, the market did manage a rally back to the 50% retracement level from the April lows. The failure at the level confirms the ongoing bearish trend for now and keeps asset allocations on "high alert." I have updated the chart from last week with the previously suggested rally lines shaded **light red**.•The black lines are the new projections based on Friday's close. **Currently, there is roughly 2.8% of upside, which is consistent with the seasonal trends as noted above, versus 5.3% of downside risk into December.** **Action:**•*After reducing exposure in portfolios last week, we will look for opportunities to reduce risk further as needed. Sell weak positions into any market strength on Monday.*

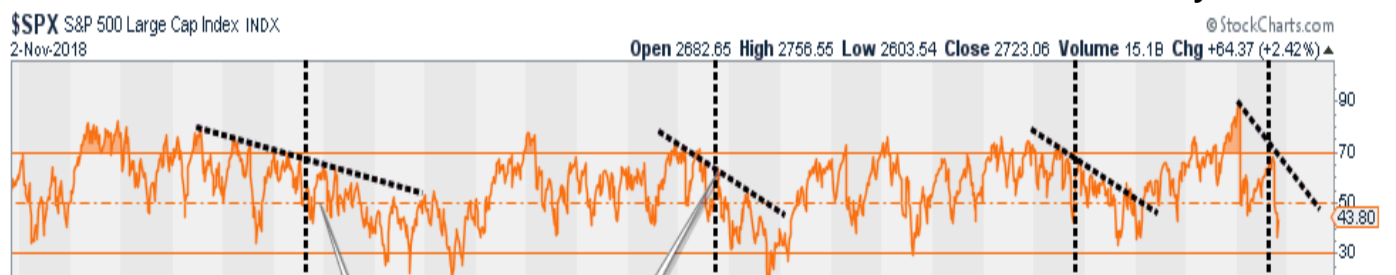


Weekly View

As noted last week, with the trend line from the 2016 lows now violated, the tenor of the market has changed from bullish to bearish. The failure of the market to break out of the current trading range this past week sets investors up for disappointment next week. It is critically important the market does not violate the trading range lows on a weekly closing basis. **Action:** *Sell weak positions into any strength on Monday and reduce exposure ahead of the election.*

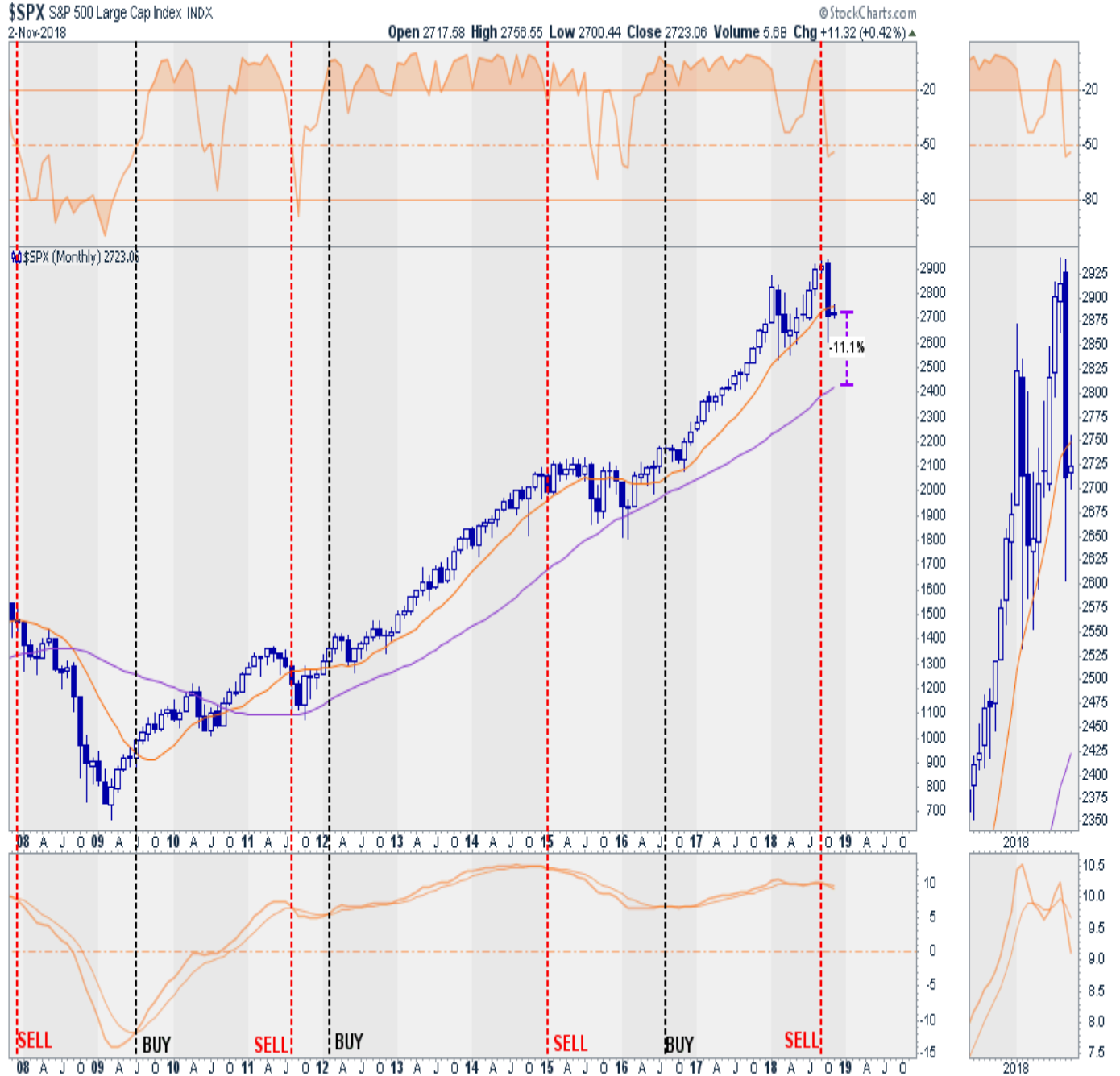


Of much greater concern is the violation of the long-term trend line combined with declining relative strength and a weekly "sell signal" triggered at a high level. **As noted the prior two times all three of these indications have coincided it marked the end of the bull market cycle.**



Monthly View

On a monthly basis, the backdrop has also worsened. RSI has dropped into correction territory along with a confirmed monthly sell signal. As I noted back in both December and September, extensions of the market that move 3-standard deviations above the long-term mean are unsustainable. Currently, a reversion back to the longer-term monthly average would entail a drop currently to 2400 or 11% lower than where we closed on Friday. **Action: Reduce risk on rallies, as detailed above, and look to add hedges on any breaks of long-term support**



Actions To Take Next Week

As I stated last week:

"With the market exceeding 3-standard deviations below the 50-dma currently, the extreme oversold condition still sets the market up for a fairly strong bounce. That bounce SHOULD be sold into."

Portfolio management processes have now been switched from "buying dips" to "selling rallies" until the technical backdrop changes. Last week we:

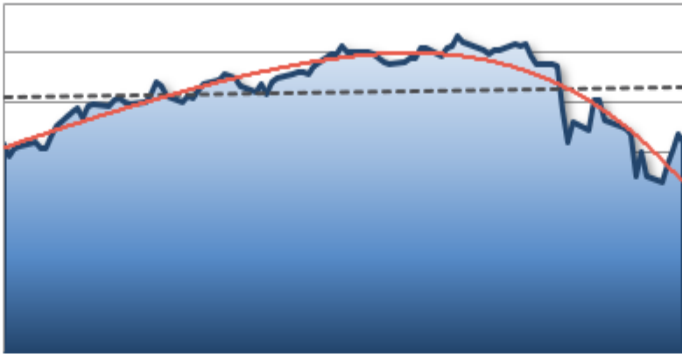
1. **Reduced overall portfolio exposures to 50/50 from 60/40.** Allocations will be reduced further upon increased technical deterioration.
2. **Rebalanced bond exposures and reduced risk.** We improved credit quality and are positioning for economic weakness and lower yields by managing durations. (Read: [The Upcoming Bond Bull Market](#))
3. **Raised cash levels to 10%.** (Cash is a risk-free portfolio hedge)
4. **Reviewed all positions** We sold several positions which were under-performing the broader market to reduce portfolio drag.
5. **Planed for further hedges to portfolios** (Short term treasuries, cash, and short positions on breaks of support)
6. **Drastically tightened up stop losses.** We had previously given stop losses a bit of leeway as long as the bull market trend was intact. Such is no longer the case.)

We will continue to monitor the markets and adjust portfolio exposures accordingly. **See you next week.**

Market & Sector Analysis

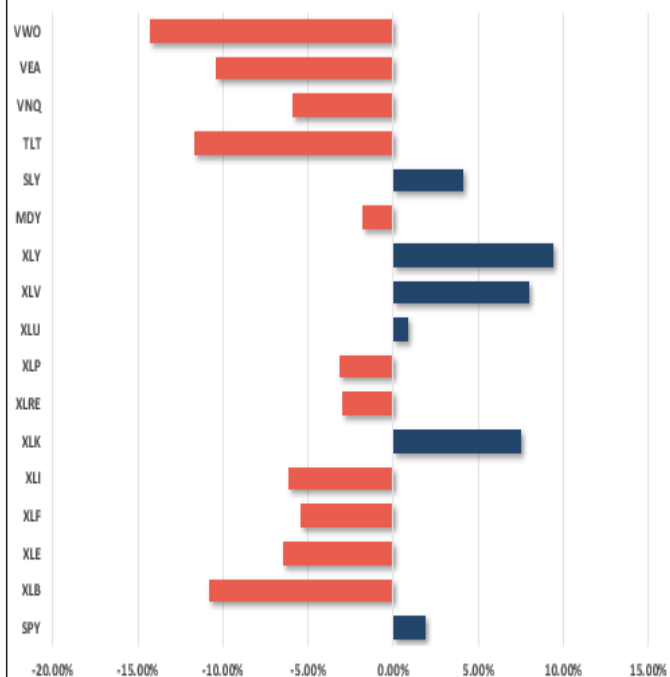
Data Analysis Of The Market & Sectors For Traders

S&P 500 Tear Sheet

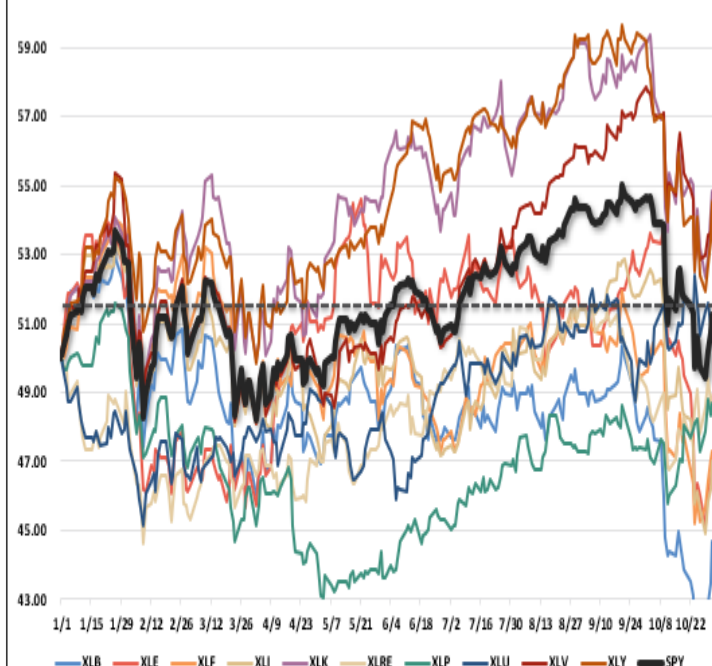
3 Month SPY Price							SPY RISK INFO						
							Item	T 2-Yr	T 1-Yr.	YTD	% Diff YTD/T1- YR		
							Price Return	29.63%	5.55%	1.88%	(66.05%)		
							Max Drawdown	-11.76%	-11.76%	-11.76%	0.00%		
							Sharpe	1.38	0.53	0.13	(0.75)		
							Sortino	1.47	0.53	0.15	(0.72)		
							Volatility	11.25	14.13	15.23	0.08		
							Daily VaR-5%	(2.10)	(14.72)	(21.21)	0.44		
							Mnthly VaR-5%	0.39	(12.23)	(17.56)	0.44		
S&P 500 Fundamental Analysis									S&P 500 Market Cap Analysis				
Item	2 years ago	1 year ago	Current	1 Yr % Change	5 Year High	5 year Low	% From High	% From Low	Item	12-M Ago	Current	% Chg	
Dividend Yield	1.99%	1.87%	1.89%	1.30%	2.16%	1.67%	(12.62%)	13.42%	Shares	2,438.6	2,409.3	(1.20%)	
P/E Ratio	18.76	21.12	17.69	(19.40%)	21.49	16.66	(17.7%)	6.18%	Sales	56,583	61,010	7.82%	
P/S Ratio	2.90	3.22	3.24	0.55%	3.53	2.23	(8.22%)	45.14%	SPS	23.2	25.3	9.13%	
P/B Ratio	3.27	3.56	3.82	6.98%	4.08	2.74	(6.43%)	39.73%	Earnings	7,669	8,757	14.19%	
ROE	15.08%	15.91%	17.15%	7.23%	17.15%	15.01%	0.00%	14.26%	EPS TTM	3.7	4.4	18.49%	
ROA	2.82%	2.98%	3.26%	8.74%	3.26%	2.82%	0.00%	15.45%	Dividend	1.4	1.5	9.45%	
S&P 500 Asset Allocation													
Sector	1 Year Price Return	Weight	Beta	P/E	P/E High-5yr (Mo.)	P/E Low-5Yr (Mo.)	P/E % From Peak	ROE	DIV. YIELD	TTM Earnings Yield	Current Forward Earnings	Forward PE	

Performance Analysis

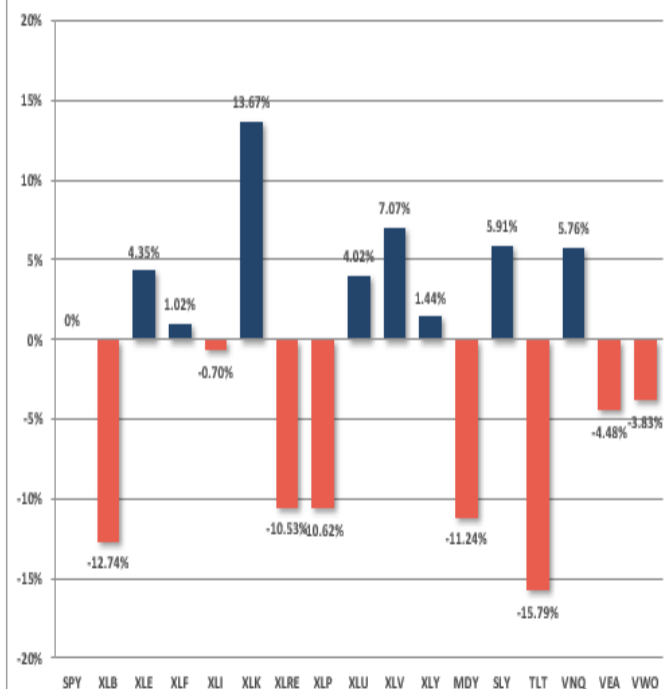
Year To Date Performance



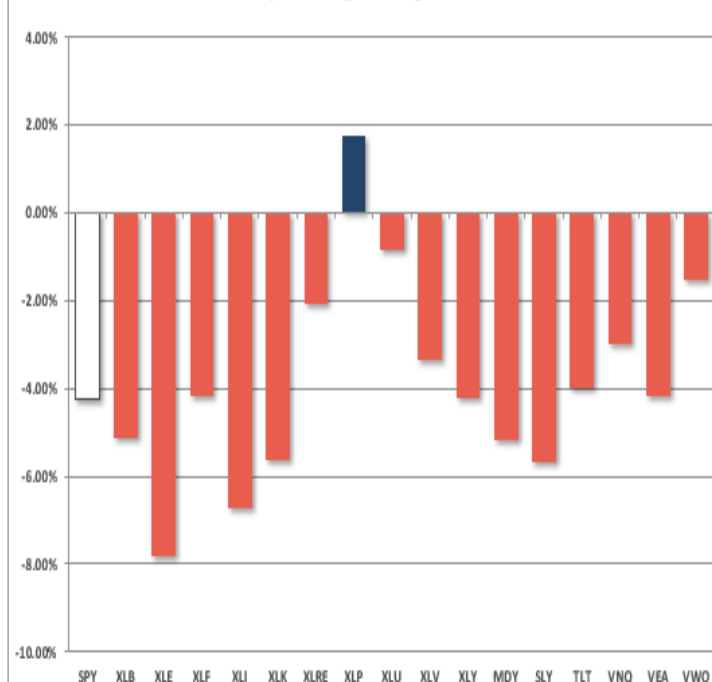
YTD Price - S&P Sectors Recalibrated To \$50/share



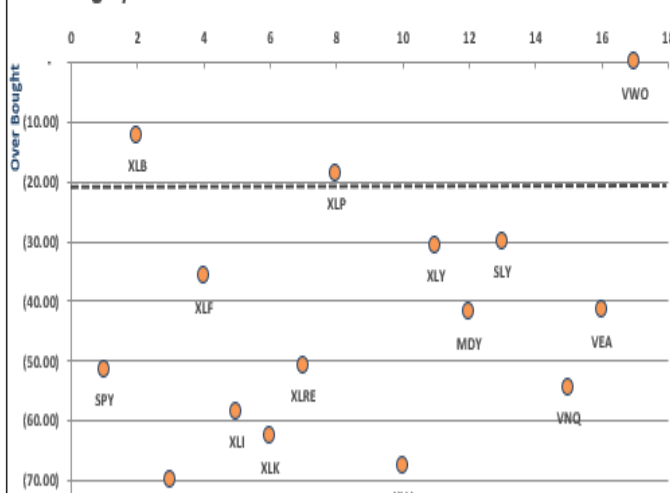
Year To Date Performance Relative To S&P 500



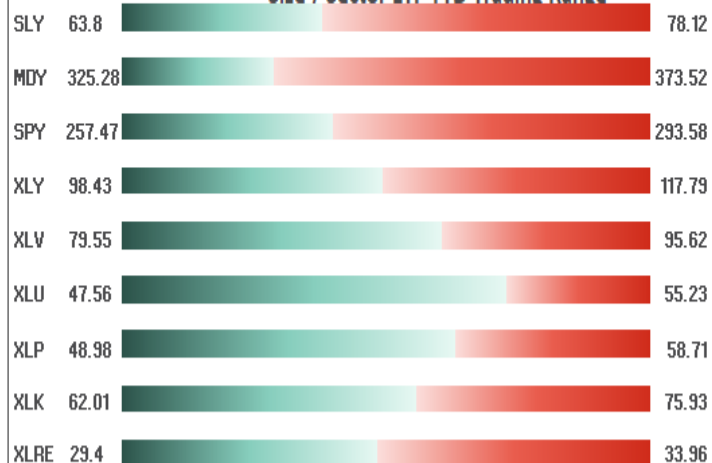
Price Deviation From 50-Day Moving Average



Overbought/Oversold 14-Periods



Size / Sector ETF YTD Trading Range



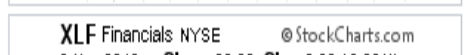
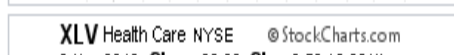
ETF Model Relative Performance Analysis

RELATIVE PERFORMANCE		TICKER ETF NAME		Current Price	Model Position Price Changes Relative to Index					SHORT WMA	LONG WMA	% DEV - Short M/A	% DEV - Long M/A	Buy / Sell Signal
					1 Week	4 Week	12 Weeks	24 Weeks	52 Weeks					
BENCHMARK		IVV	ISHARS-SP500	273.89	2.54	(5.53)	(3.92)	0.25	5.27	286.21	278.64	-4.30%	-1.71%	BUY
TACTICAL	SECTORS	XLB	SPDR-MATLS SELS	53.96	3.55	(0.85)	(4.12)	(10.11)	(13.55)	57.27	58.07	-5.78%	-7.07%	SELL
		XLE	SPDR-EGY SELS	67.56	(0.92)	(6.91)	(6.35)	(13.76)	(6.90)	73.47	73.59	-8.05%	-8.20%	SELL
		XLF	SPDR-FINL SELS	26.38	1.89	(0.25)	(1.76)	(5.87)	(6.76)	27.67	27.66	-4.66%	-4.61%	BUY
		XLI	SPDR-INDU SELS	70.99	0.19	(4.53)	(1.51)	(6.01)	(6.44)	76.09	74.99	-6.70%	-5.34%	BUY
		XLK	SPDR-TECH SELS	68.74	(1.59)	(1.10)	(1.95)	(0.44)	3.00	72.93	70.64	-5.74%	-2.69%	BUY
		XLP	SPDR-CONS STPL	55.11	(0.16)	8.66	7.43	10.99	(1.56)	54.14	52.50	1.78%	4.96%	BUY
		XLU	SPDR-UTIL SELS	53.15	(2.95)	4.64	4.22	8.24	(9.00)	53.60	51.85	-0.83%	2.51%	BUY
		XLC	SPDR-COMM SV SS	45.84	0.24	1.39	(3.04)			47.98	48.74	-4.46%	-5.94%	SELL
		XLV	SPDR-HLTH CR	89.26	(0.44)	0.20	3.51	7.03	4.10	91.95	86.99	-2.92%	2.61%	BUY
	XLY	SPDR-CONS DISCR	107.97	1.87	1.73	(0.29)	2.71	12.47	112.79	109.05	-4.28%	-0.99%	BUY	
	SIZE	MGK	VANGD-MG CAP GR	117.08	(0.90)	(1.05)	(1.58)	(0.29)	2.68	124.01	120.22	-5.59%	-2.61%	BUY
		IJR	ISHARS-SP SC600	80.03	1.98	1.02	(4.32)	(3.18)	2.97	85.50	83.40	-6.39%	-4.04%	BUY
CORE	Equal Weight Market	RSP	GUGG-SP5 EQ ETF	100.15	1.14	0.54	(0.48)	(1.80)	(1.73)	104.67	102.96	-4.32%	-2.73%	BUY
	Dividend	VIG	VANGD-DIV APPRC	104.83	0.96	1.36	2.67	2.62	2.57	107.93	104.63	-2.87%	0.19%	BUY
	Real Estate	VNQ	VIPERS-REIT	78.04	(1.45)	5.33	(0.62)	2.65	(11.35)	80.96	79.24	-3.61%	-1.52%	BUY
	International	IDV	ISHARS-INTL SD	31.09	0.23	2.42	(0.33)	(8.46)	(12.31)	32.16	32.83	-3.34%	-5.29%	SELL
		VWO	VANGD-FTSE EM	39.36	2.67	5.89	(3.16)	(12.68)	(17.06)	40.42	43.21	-2.63%	-8.90%	SELL
FI	Intermediate Duration	TLT	ISHARS-20+YTB	112.00	(5.14)	4.61	(3.26)	(4.69)	(16.13)	117.50	119.04	-4.68%	-5.92%	SELL
	International	BNDX	VANGD-TTL INT B	54.47	(2.94)	6.16	3.45	(0.01)	(6.14)	54.56	54.57	-0.17%	-0.18%	SELL
	High Yield	HYG	ISHARS-IBX HYCB	84.27	(2.49)	4.32	2.04	(1.57)	(9.49)	85.68	85.64	-1.65%	-1.60%	BUY
	Cash	BSV	VANGD-SHT TRM B	77.74										

REAL INVESTMENT ADVICE

Sector & Market Analysis:

Sector-by-Sector



STOCK	YESTERDAY PRICE	PRICE CHANGE	SUPPORT	RESISTANCE	ALERT	LONG TERM TREND
SPY	\$272.01	-1.5 (-0.55%)	263.6	280.52	MACD ABOVE SIGNAL	Bearish 
XLB	\$53.96	-0.13 (-0.24%)	51.91	55.99		Bearish 
XLE	\$67.56	-0.17 (-0.25%)	64.55	70.85		Bearish 
XLF	\$26.38	-0.02 (-0.08%)	25.46	27.38	MACD ABOVE SIGNAL	Bearish 
XLI	\$70.99	-0.12 (-0.17%)	68.99	73.13		Bearish 
XLK	\$68.74	-1.37 (-1.95%)	66.12	71.58	Crossed Below SMA200	Bearish 
XLK	\$68.74	-1.37 (-1.95%)	66.12	71.58	MACD ABOVE SIGNAL	Bearish 
XLP	\$55.11	-0.29 (-0.52%)	53.84	56.36		Bullish 
XLRE	\$31.94	-0.27 (-0.84%)	30.89	32.99	Crossed Above SMA200	Neutral
XLU	\$53.15	-0.3 (-0.56%)	51.78	54.6		Bullish 
XLV	\$89.26	-0.56 (-0.62%)	86.19	92.7		Bullish 
XLY	\$107.97	0.44 (0.41%)	104.31	111.69	MACD ABOVE SIGNAL	Bearish 


RIA Pro

POSITION ALERTS
 PROVIDED BY
RIAPro.net

Set Up Your Own Portfolio
 Today And Start Getting
 Actionable Intelligence

Discretionary and Healthcare last week the discretionary sector broke back above the 200-dma in a fairly strong rally. The sell-off on Friday has the sector sitting on support so a rally next week is critical to keep this sector in a more bullish position. Healthcare, after a pullback to the 200-dma bounced nicely with the market last week. We remain slightly overweight these two sectors in portfolios currently. **Technology** rallied back to and failed at the 200-dma as Apple (AAPL) weighed on the sector on Friday. After having taken profits previously in this sector, we have moved stops up to recent lows. It is critical the sector moves back above the 200-dma or lower lows will be likely. **Industrials, Materials, Energy, Financials, Communications** -we sold Financials on the rally on Friday as stops were previously violated and the recent rally gave us a better opportunity to exit the position. We continue to maintain no excess exposure to Industrials, Materials, and Energy which continue to under-perform the broader market. **Real Estate, Staples, and Utilities** have held their ground during the rough month of October. If the recent rally in the market continues post-election look for a pullback in these sectors to support. We will look to

increase allocations in Staples and Utilities on opportunity. While Real Estate has caught some flows in the "risk off" rotation, remain careful as the "actual" real estate market is under a lot of pressure from higher rates. This will eventually filter through to REIT's.



STOCK	YESTERDAY PRICE	PRICE CHANGE	SUPPORT	RESISTANCE	ALERT	LONG TERM TREND
EEM	\$40.82	0.26 (0.64%)	39.37	42.34	MACD ABOVE SIGNAL	Bearish 
EFA	\$63.38	0.12 (0.19%)	61.98	64.8	MACD ABOVE SIGNAL	Bearish 
GLD	\$116.65	0.02 (0.02%)	115.78	117.55	MACD BELOW SIGNAL	Bearish 
IVV	\$273.89	-1.53 (-0.56%)	265.57	282.49	MACD ABOVE SIGNAL	Bearish 
MDY	\$339.08	0.36 (0.11%)	330.91	346.96	Full Gap Up	Bearish 
MDY	\$339.08	0.36 (0.11%)	330.91	346.96	MACD ABOVE SIGNAL	Bearish 
RSP	\$100.15	-0.36 (-0.36%)	97.25	103.16	Full Gap Up	Bearish 
RSP	\$100.15	-0.36 (-0.36%)	97.25	103.16	MACD ABOVE SIGNAL	Bearish 

Small-Cap and Mid Cap•- indices rallied a bit this past week and are quickly headed back into overbought territory. Use rallies to reduce risk in these markets for now until a better entry point presents itself. The damage to small and mid-cap markets is indicative of a weakening economic backdrop. **Emerging and International Markets**•rallied last week a bit after hitting new lows. **There•is still no compelling reason to add these markets to portfolios at this time.****Dividends, Market, and Equal Weight**•- The overall market dynamic has changed for the negative in recent weeks. Currently, Dividends are outperforming Equal and Market Weight indices as the chase for yield and safety has weighed on more aggressive sectors of the market. Use the recent rally to reduce overall equity risk for now. **Gold**••has started to build a bit of a bullish case. After finally breaking above the 50-dma, last week's rally saw gold sell off back to support and hold. The bounce on Friday is encouraging. We will want to see gold break above \$117 with some conviction before considering a trade. However the risk/reward isn't great. Currently, there isn't a lot of upside as the 200-dma sits at \$120. Stops remain at \$111. **(Risk: \$6 Reward \$3)** **Bonds**• The rally over the last couple of weeks fell apart last week as bonds sold off as money rotated back to the "risk" trade. We have continued to use opportunity to shore up duration risk, rebalance models, and increase quality. *Currently, all trading positions are currently closed.* The table below**shows thoughts on specific actions related to the current market environment.**•

(These are not recommendations or solicitations to take any action. This is for informational purposes only related to market extremes and contrarian positioning within portfolios. Use at your own risk and peril.)



		Over Bought / Sold	50/200 DMA	Trend	Action	OVERWEIGHT	BUY	HOLD	REDUCE	SELL	Notes
XLV	Discretionary	Rising	Positive	Warning	Reduce				X		Testing 200-DMA
XLK	Technology	Rising	Positive	Warning	Reduce				X		Broke 50-DMA/Take Profits
XLI	Industrials	OS	Neutral	Neutral	Sell					X	Broke 200-DMA/Reduce
XLB	Materials	OS	Negative	Negative	Sell					X	Broke 200-DMA/Reduce
XLE	Energy	OS	Warning	Warning	Reduce				X		Broke 200-DMA/Reduce
XLP	Staples	OB	Positive	Positive	Add		X				Add On Break Above Double Top
XLV	Health Care	OS	Positive	Positive	Hold			X			Take Profits
XLU	Utilities	OB	Positive	Positive	Hold			X			Hold Current Positions
XLF	Financials	OS	Negative	Negative	Stopped Out					X	Stopped Out
XLC	Telecom	OS	Neutral	Neutral	N/A			X			No Position / No History
XLRE	Real Estate	Rising	Positive	Positive	Hold			X			Hold Current Positions
\$SML	Small Caps	Rising	Positive	Neutral	Stopped Out					X	Stopped Out
EEM	Emerging Mkt	Rising	Negative	Negative	Sell					X	No Position
EFA	International	Rising	Negative	Positive	Sell					X	No Position
GLD	Gold	OB	Negative	Negative	Neutral					X	Trade Opprtunity Forming
MDY	Mid Cap	Rising	Positive	Neutral	Stopped Out					X	Stopped Out
RSP	SP500 Equal Wgt	Rising	Positive	Positive	Hold			X			Reduce On Rally
SDY	SP500 Dividend	OB	Positive	Positive	Hold			X			Reduce On Rally
IVV	SP500 Market Wt	Rising	Positive	Positive	Hold			X			Reduce On Rally
TLT	20+ Yr. Bond	OS	Negative	Negative	Hold			X			No Trading Pos/Buying Ind. Bonds

LEGEND: X = THIS WEEK => PREVIOUS DECLINING <= PREVIOUS IMPROVING X No Position

Portfolio/Client Update:

The rally we were wanting to use to reduce risk occurred last week. That rally peaked at our target zone of 2740-2750 on Friday morning and we used that moment to raise some cash. This turned out to be a timely execution as the market then turned lower, and negative, throughout the rest of the day on Friday. The market action remains troubling and with the mid-term elections on Tuesday we are more comfortable holding some cash until that risk passes. The market remains oversold on a short-term basis. That oversold condition combined with the seasonal "*winds*" at our back, we will look for continued rallies to reduce risk and rebalance into.

Please review the "**Checklist Of Actions To Taken**" in the main missive above. We will continue to apply these guidelines to our portfolios over the next couple of weeks. We took the following actions on Friday:

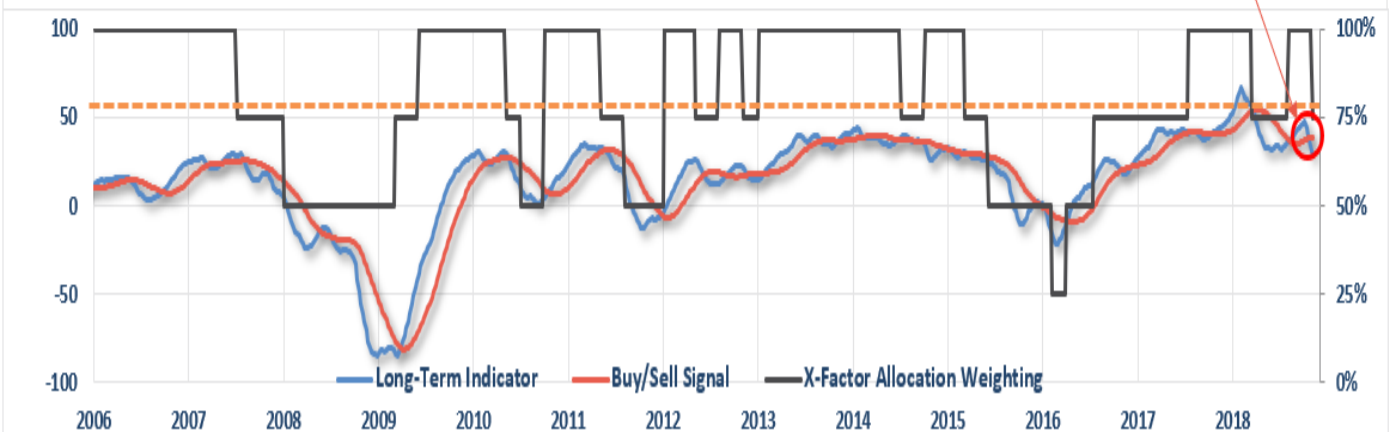
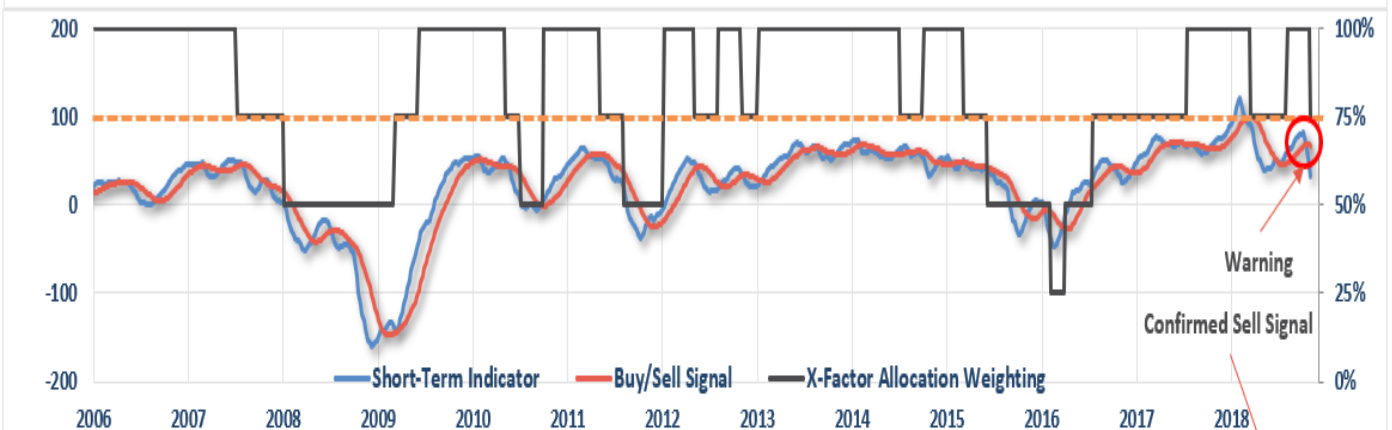
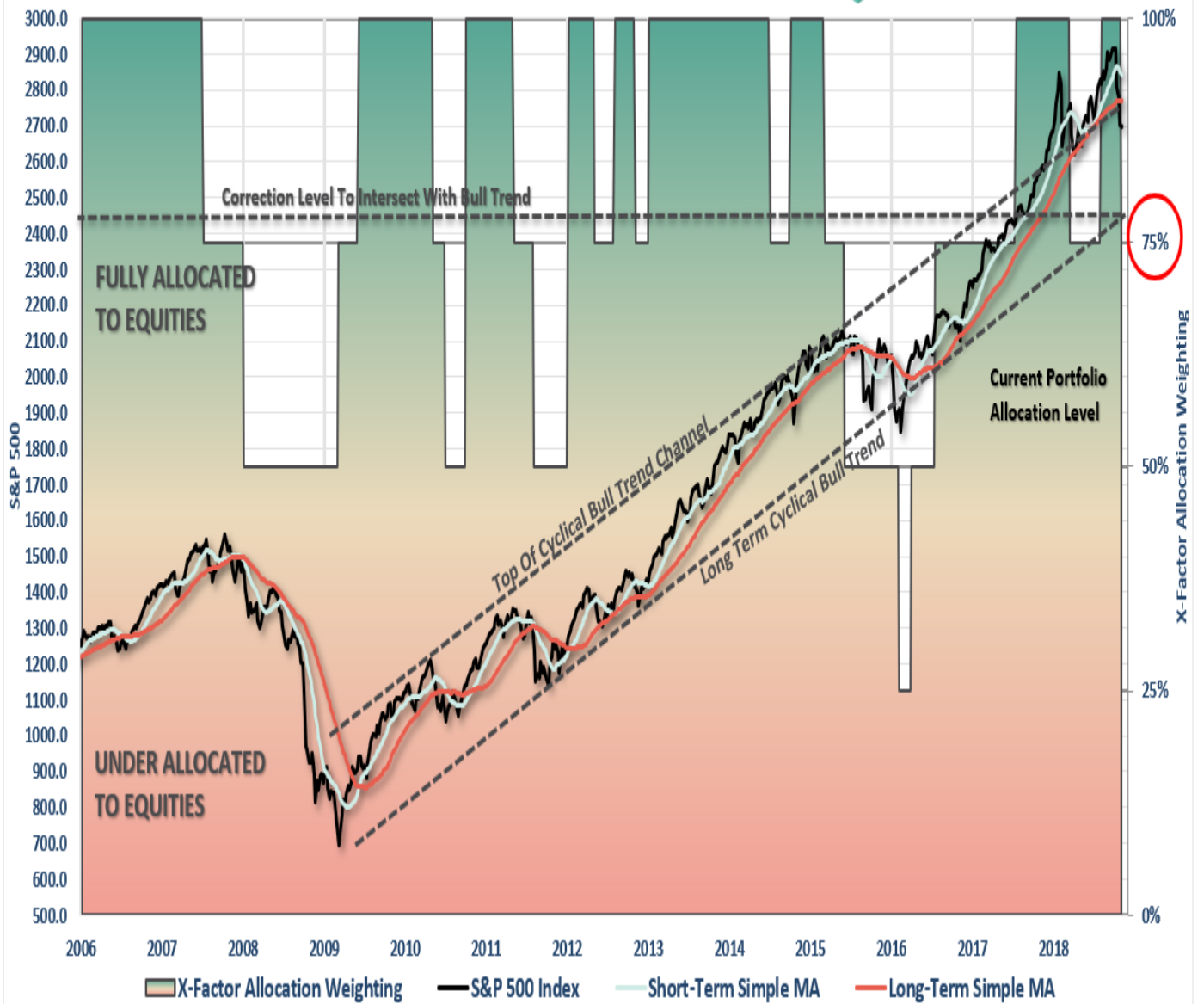
- **New clients:**•We continue to HOLD OFF the on-boarding process into our portfolio models until a better risk/reward opportunity emerges.•
- **Equity Model:**•We sold several laggards on Friday including SU, KLAC, JPM, and HD. We have a couple of more holdings on the "chopping block" if performance doesn't improve soon.
- **Equity/ETF blended**•- Same as with the equity model. Small and Mid-Caps were sold previously on stop-loss violations.
- **ETF Model:** Small and Mid-cap holdings were previously sold on absolute stop violations. Friday we sold XLF after a stop-loss violation.

As noted previously, the violations of the market "*this time*" are markedly different than what we have seen previously. However, we do NOT want to panic if this is indeed just a correction within an ongoing bullish trend. The market HAS NOT violated the lows of February and earnings growth (*while disappointing*) is still growing. **The pick up in volatility is certainly not enjoyable, but we don't want to let our emotions get the better of our discipline.**•

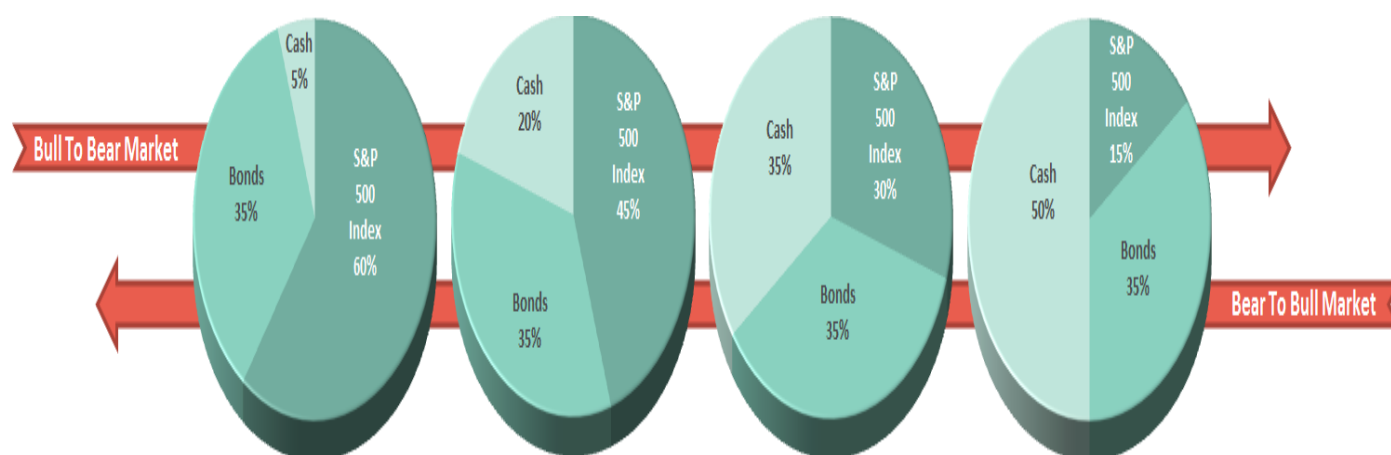
THE REAL 401k PLAN MANAGER

The Real 401k Plan Manager - A Conservative Strategy For Long-Term Investors

Risk Management Analysis



There are 4-steps to allocation changes based on 25% reduction increments. As noted in the chart above a 100% allocation level is equal to 60% stocks. I never advocate being 100% out of the market as it is far too difficult to reverse course when the market changes from a negative to a positive trend. Emotions keep us from taking the correct action.



Starting To Reduce Exposure To Reduced Target Levels

Last week we got the rally we have been looking for to raise some cash into. This week, I have lowered the allocation model to 75% of target. **HOWEVER, this does NOT mean immediately go out and sell 25% of your holdings.** The model moves in 25% increments as signals are triggered. However, by the time a signal is triggered, the market tends to be very oversold which is why we wait for a bounce to opportunistically sell into. As noted throughout the main body of the newsletter, we did reduce equity risk in portfolios by 10% this past week. As long as the market remains in a more negative trend we will continue to use rallies to reduce equity further until we get to the 25% target. With BOTH of our primary SELL SIGNALS in place, we do need to adjust the model lower. Continue to use rallies to reduce risk towards a target level with which you are comfortable.

Remember, this model is not ABSOLUTE - it is just a guide to follow. Defense remains our primary strategy for 401k-plans currently.

- If you are **overweight equities** - reduce international, emerging market, mid, and small-capitalization funds on any rally next week. Reduce overall portfolio weights to 90% of your selected allocation target.
- If you are **underweight equities** - reduce international, emerging market, mid, and small-capitalization funds on any rally next week but hold everything else for now.
- If you are at **target equity allocations** - reduce overall equity exposure to 90% of your allocation target on any rally Monday.

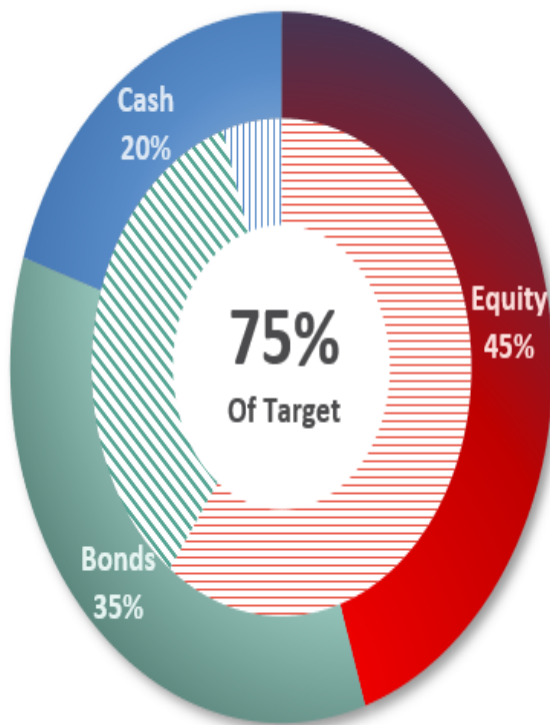
Unfortunately, 401k plans don't offer a lot of flexibility and have trading restrictions in many cases. **Therefore, we have to minimize our movement and try and make sure we are catching major turning points.** Over the next couple of weeks, we will know for certain as to whether more changes need to be done to allocations as we head into the end of the year. If you need help after reading the alert; don't hesitate to [contact me](#).

Current 401-k Allocation Model

The 401k plan allocation plan below follows the K.I.S.S. principle. By keeping the allocation extremely simplified it allows for better control of the allocation and a closer tracking to the benchmark objective over time. ***If you want to make it more complicated you can, however, statistics show that simply adding more funds does not increase performance to any great***

degree.)

Current Portfolio Weighting



Current 401k Allocation Model

20.00% Cash + All Future Contributions

Primary concern is the protection of investment capital

Examples: Stable Value, Money Market, Retirement Reserves

35.00% Fixed Income (Bonds)

Bond Funds reflect the direction of interest rates

Examples: Short Duration, Total Return and Real Return Funds

45.00% Equity (Stocks)

The vast majority of funds track an index.

Therefore, select on ONE fund from each category.

Keep it Simple.

10% Equity Income, Balanced or Conservative Allocation

35% Large Cap Growth (S&P 500 Index)

0% International Large Cap Dividend

0% Mid Cap Growth

401k Choice Matching List

The list below shows sample 401k plan funds for each major category. In reality, the majority of funds all track their indices fairly closely. Therefore, if you don't see your exact fund listed, look for a fund that is similar in nature.

Common 401K Plan Holdings By Class

Cash	<i>Stable Value Money Market Retirement Savings Trust Fidelity MIP Fund G-Fund Short Term Bond</i>	Equity Large Cap	<i>Vanguard Total Stock Market Vanguard S&P 500 Index Vanguard Capital Opportunities Vanguard PrimeCap Vanguard Growth Index Fidelity Magellan Fidelity Large Cap Growth Fidelity Blue Chip Fidelity Capital Appreciation Dodge & Cox Stock Hartford Capital Appreciation American Funds AMCAP American Funds Growth Fund Of America Oakmark Growth Fund C-Fund (Common Assets) ALL TARGET DATE FUNDS 2020 or Later</i>
Fixed Income	<i>Pimco Total Return Pimco Real Return Pimco Investment Grade Bond Vanguard Intermediate Bond Vanguard Total Bond Market Babson Bond Fund Lord Abbett Income Fidelity Corporate Bond Western Asset Mortgage Backed Bond Blackrock Total Return Blackrock Intermediate Bond American Funds Bond Fund Of America Dodge & Cox Income Fund Doubleline Total Return F-Fund</i>	Balanced Funds	<i>Vanguard Balanced Index Vanguard Wellington Fund Vanguard Windsor Fund Vanguard Asset Allocation Fidelity Balanced Fund Fidelity Equity Income Fidelity Growth & Income American Funds Balanced American Funds Income Fund ALL TARGET DATE FUNDS 2020 or Sooner</i>
International	<i>American Funds Capital World G&I Vanguard Total International Index Blackrock Global Allocation Fund Fidelity International Growth Fund Dodge & Cox International Invesco International Core Equity Goldman Sachs International Growth Opp.</i>	Small/Mid Cap	<i>Vanguard Mid Cap Growth Fidelity Mid Cap Growth Artisan Mid Cap Goldman Sachs Growth Opportunities Harbor Mid Cap Growth Goldman Sachs Small/Mid Cap Opp. Fidelity Low Price Stock Fund Columbia Acorn US Federated Kaufman Small Cap Invesco Small Cap</i>

The above represents a selection of some of the most common funds found in 401k plans. **If you do not see your SPECIFIC fund listed simply choose one that closely resembles the examples herein.** All funds perform relatively similarly within their respective fund classes.