

# Playing Defense:

## We Don't Know What Happens Next

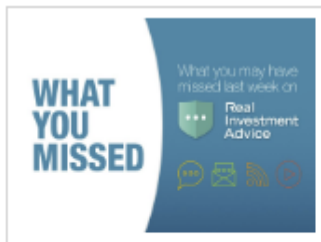


- *Playing Defense: We Don't Know What Happens Next*
- *MacroView: Fed Emergency Cut Exposes "Recession" Risks*
- *Financial Planning Corner: Tips For A Volatile Market*
- *Sector & Market Analysis*
- *401k Plan Manager*

Follow Us On: [Twitter](#), [Facebook](#), [Linked-In](#), [Sound Cloud](#), [Seeking Alpha](#)

---

## Catch Up On What You Missed Last Week



### #WhatYouMissed On RIA This Week: 03-06-20

Written by Lance Roberts | Mar 6, 2020

Here is what you might have missed from the RIA Crew last week. A compilation of our best blogs, newsletter, podcasts, the daily radio show and commentary from RIAPRO.NET.

[>> Read More](#)

---

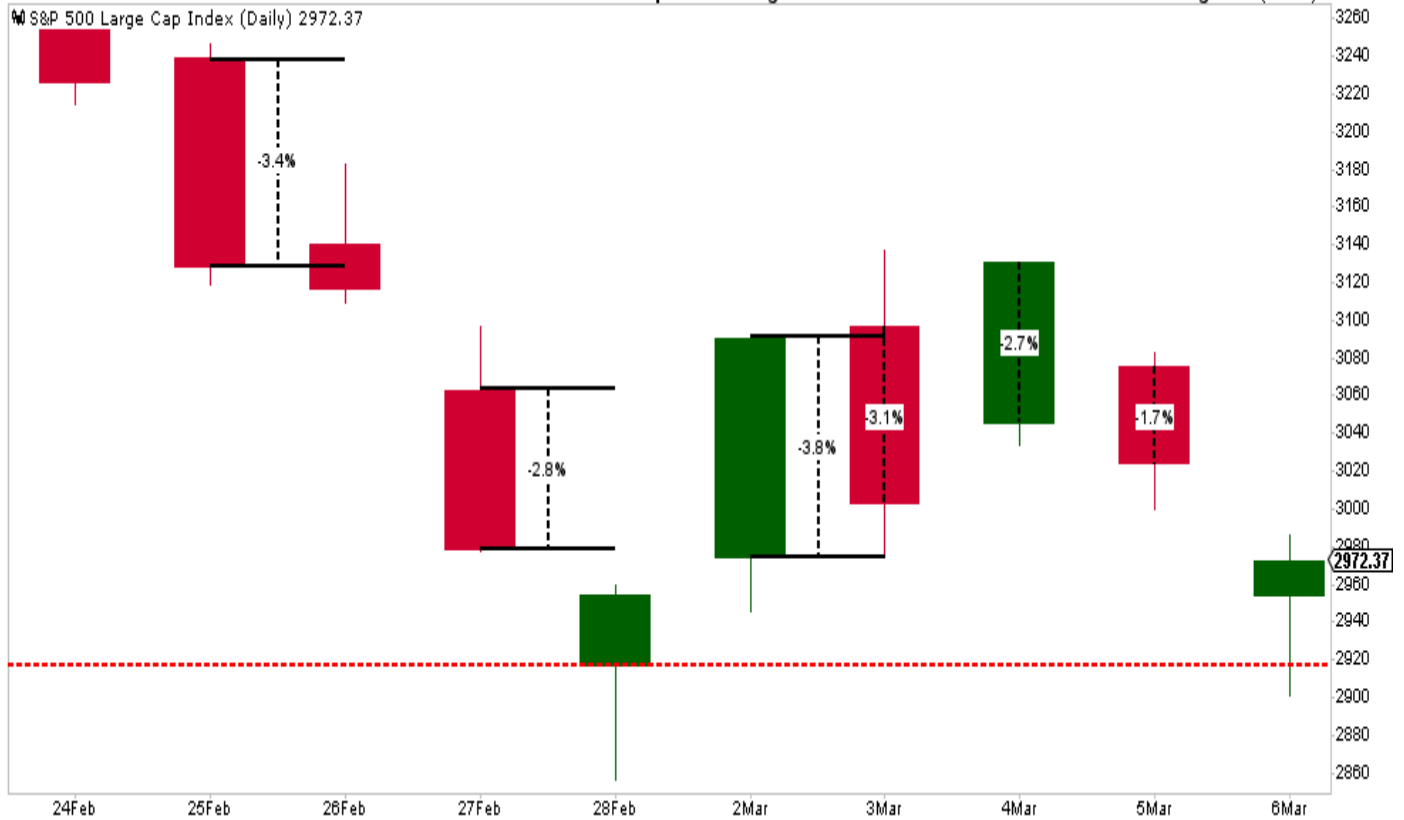
## Playing Defense: We Don't Know What Happens Next

Last week, we discussed "[Navigating What Happens Next](#)," and set out to answer 3-important questions:

1. *Is the correction over?*
2. *Is this a buying opportunity?*
3. *Has the decade long bull market ended?*

We also included a set of "*rules to follow*," based on our analysis. ***(For your review, you will find them posted again at the bottom)***

Importantly, while we have adhered to our investment process and discipline, to protect capital while participating in the markets, **the volatility over the last couple of weeks has been unnerving to say the least.** The chart below shows the daily percentage swings.



With markets swinging wildly by 2-3% daily, it has been more nauseating than the 418-foot drop of the Kingda Ka roller coaster in Jackson, NJ. While it seems like last week was another "horrible" week for the market, it actually ended slightly above where we ended last week.

It's important to keep some perspective with respect to your portfolio management, particularly when volatility surges. **Emotions are the biggest risk to your investments, and capital, over time.**

REAL  
INVESTMENT  
ADVICE

Are your investments prepared  
for the next bear market?

SCHEDULE YOUR  
CONSULTATION  
TODAY

## We Really Don't Know

While we laid out a fairly detailed game plan last week, looking at daily, weekly, and monthly indicators, **the reality is that we don't know with any certainty what happens next**, particularly when you have an exogenous situation like "COVID-19."

However, we agree with Carl Swenlin that you can't rule out a "bear market" has now started, [like we saw in 2018](#), and the highs of the year are in.

***"Even though it is not officially a bear market, I think we should begin to interpret charts and indicators in the context of a bear market template.?"***

We agree, particularly within the scope of the comments made by my colleague Doug Kass on Friday morning:

***"The proximate cause for the precipitous drop in yields is the spread of the coronavirus - which is delivering a body blow to global economic growth (which will come to a standstill in the months ahead).***

*In all likelihood, world GDP growth will likely be flat over the next few months - to unnaturally low levels of activity. **To be sure some segments of the economy (in this reset) will not recoup sales and will have a permanent loss, i.e., hotels, travel, etc.***

***However, other segments of the economy - like technology - will likely recoup almost all the growth delayed by the coronavirus shock.***

*The next few months will be challenging from an economic standpoint **and volatile from a stock market perspective.** Moreover, evolving market structure issues will introduce more uncertainty - and likely deliver a continuation of the extreme volatility seen since mid-February."*

We agree with Doug's view and have spent the last month **moving OUT of areas like Basic Materials (XLB), Industrials (XLI), Discretionary (XLY), Energy (XLE), Transports (XTN), and Financials (XLF).**

While financials don't have as much direct "virus" related risk, the risk to major banks is two-fold:

1. *The collapse in "net interest margins" as the Fed cuts rates; and*
2. *Potential for a wave of corporate-debt defaults coming from the economic slowdown/recession, particularly in the Energy sector.*

The second point was noted by [Mish Shedlock](#) on Friday:

***"There is a credit implosion coming up. A lot of leveraged drillers and crude suppliers dependent on prices above \$50/bbl are going to facing credit defaults.***

*This will lead to a deflationary outcome. But you can blame the Fed.*

***Deflation is not really about prices. It's about the value of debt on the books of banks that cannot be paid back by zombie corporations and individuals."***

Collapsing yields, oil prices, and "emergency rate cuts," are signs which suggest something has "broken" in the economy. These ramifications are not inconsequential. My friend Eric Hickman, of [Kessler Investment Advisors](#), sent me an excellent note on Friday:

*"Unsurprisingly, I think that the Coronavirus is the catalyst to tip the U.S. into a recession. We all know that recessions are not good for stocks, but by how much, and which ones?"*

*The last two recessions hit all sectors of the S&P 500 significantly. Even so-called ?defensive sectors? like consumer staples and healthcare got hit by at least a third of their value (33%). We are just two weeks, and 11% away from an all-time high in the S&P 500. There is plenty of downside left."*

# Nowhere to Hide in Stocks

Peak to Trough Drawdowns (Total Return) in Various Equities

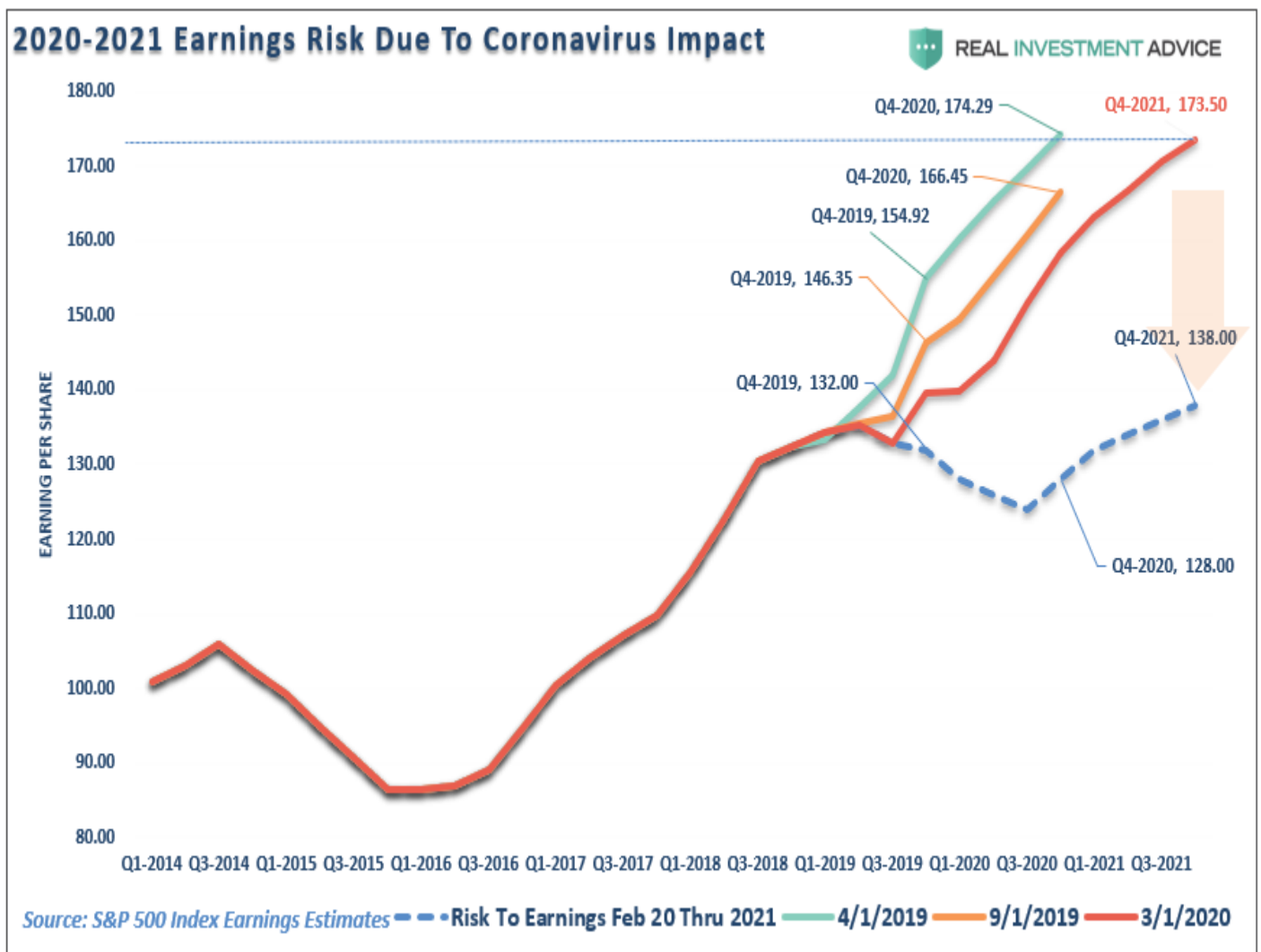
	2 Recessions Ago	Last Recession	Coronavirus
	2000-2002	2007-2009	2020 (through 3/5/2020)
	2.1 years peak to trough	1.4 years peak to trough	2 weeks so far
S&P 500	-47%	-55%	-11%
<b>Sectors</b>			
Consumer Staples	-39%	-33%	-4%
Healthcare	-41%	-39%	-7%
Utilities	-62%	-47%	-11%
Consumer Discretionary	-44%	-59%	-12%
Energy	-34%	-54%	-26%
Financial	-36%	-83%	-15%
Materials	-37%	-61%	-10%
<b>Individual Stocks</b>			
Berkshire Hathaway	-49%	-51%	-10%
Johnson & Johnson	-34%	-35%	-8%
Proctor and Gamble	-54%	-39%	-4%

When stocks come down in a recession, they ALL come down, and by eye-popping amounts!

Prepared by Kessler Investment Advisors, Inc. | 03/06/2020 | Data Source: Bloomberg

He is right.

**What we know, with almost absolute certainty, is that we will be in an economic recession within the next couple of quarters.** We also know that earnings estimates are still way too elevated to account for the disruption coming from the COVID-19.



**What we DON'T KNOW is where the ultimate bottom for the market is.** All we can do is navigate the volatility to the best of our ability and recalibrate portfolio risk to adjust for downside risk without sacrificing the portfolio's ability to quickly adjust for a massive "bazooka-style" monetary intervention from global Central Banks if needed.

**This is why, over the last 6-weeks, we have been getting more "defensive" by increasing our CASH holdings to 15% of the portfolio, with our 40% in bonds doing the majority of the heavy lifting in mitigating the risk in our remaining equity holdings.**

Regardless, of the hedges and cash, the portfolio management process over the last two weeks has not been pretty and has frayed our nerves. *(Despite our best efforts, we are still subject to human emotions).* **However, for the year, the Sector Rotation model is down 1.7% versus 9% for the S&P 500.**

**That is volatility we can live with.**



**Real Investment Show**  
with Lance Roberts

Monday to Friday,  
from 6 to 7am. [> Get it now](#)

## Back To Selling Rallies

*"At market extremes you are trading nothing but psychology. So...is it time to sell panic? Or is the hysteria just beginning? What's your time frame? What's your pain threshold? Volatility has exploded as liquidity has vanished. Bid/offer spreads are wide but not deep. Credit spreads are widening. Here are some stats from the past week:*

- **The 10 year UST yield has dropped from ~1.6% to ~0.8% in just 12 trading sessions.**
- Gold is up ~\$100,
- WTI is down ~\$12 (a 4 year low,)
- **S&P is down ~500 points, and**
- The US Dollar Index has tumbled from a 2 year high to a 1 year low.
- **The CNN Fear/Greed barometer is at 5." - Victor Adair, Polar Futures Group**

I have been in this business for a long-time and have rarely seen moves this extreme in a two-week period. **For the average investor, it is nearly impossible to stomach. It is times like these, which we have repeatedly warned about, that "buy and hold" strategies become "How Do I Get Out?"**

Last week, we discussed the risk with our [RIAPro Subscribers \(30-Day Risk-Free Trial\)](#):

*"With the markets extremely extended to the downside so a reflexive rally is likely. However, SPY will trigger a sell signal in the lower panel suggesting that any initial rally will fail and retest of support is likely."*

That is exactly what happened this past week. While we will likely get another reflexive rally in the next week or so, **any advance will be one of your better opportunities to raise cash, and reduce overall equity risk, for the time being.**

6-Mar-2020

Open 2954.20 High 2985.93 Low 2901.54 Close 2972.37 Volume 3.98 Chg -51.57 (-1.71%)



# RIA Pro

Get the latest trades, analysis, and insights from the RIA Pro team.

[> Sign up now](#)

The "equity exposure" in our portfolio models is driven by a series of "weekly signals" which we use to control risk. **Importantly, it requires a "confirmation" of the indicators to adjust risk**



exposure in portfolios accordingly.

On Friday, the markets confirmed that risk exposure in portfolios should be reduced lower for now. Fortunately, we have been reducing risk over the last 6-weeks, as noted above, but the signals have now confirmed our previous actions were correct. If the market breaks the 2-year moving average, we will need to substantially reduce risk further.



As I said above, I am reprinting our rules from last week to use on any rally into the "sell zone" over the next week.

These are the same rules we use to reduce the risk in our portfolio management process, with the exception of #7.

1. **Move slowly.** There is no rush in making dramatic changes. Doing anything in a moment of "panic" tends to be the wrong thing.

2. ***If you are over-weight equities, DO NOT try and fully adjust your portfolio to your target allocation in one move. Again, after big declines, individuals feel like they "must" do something. Think logically above where you want to be and use the rally to adjust to that level.***
3. ***Begin by selling laggards and losers. These positions were dragging on performance as the market rose and they led on the way down.***
4. ***Add to sectors, or positions, that are performing with, or outperforming the broader market if you need risk exposure.***
5. ***Move ?stop-loss? levels up to recent lows for each position. Managing a portfolio without ?stop-loss? levels is like driving with your eyes closed.***
6. ***Be prepared to sell into the rally and reduce overall portfolio risk. There are a lot of positions you are going to sell at a loss simply because you overpaid for them to begin with. Selling at a loss DOES NOT make you a loser. It just means you made a mistake. Sell it, and move on with managing your portfolio. Not every trade will always be a winner. But keeping a loser will make you a loser of both capital and opportunity.***
7. ***If none of this makes any sense to you ? please consider hiring someone to manage your portfolio for you. It will be worth the additional expense over the long term.***

In the short-term, there is no need to take on exceptional risk. It is time to take precautionary measures and tighten up stops, add non-correlated assets, raise cash levels, and hedge risk opportunistically on any rally.

As noted last week, this just our approach to controlling risk.

**The only unacceptable method of managing risk at this juncture is not having a method to begin with.**

## Real Investment Report

Market updates, sector analysis, 401k plan manager & more.

> [Subscribe today](#)

## The MacroView



### **#MacroView: Fed's "Emergency Rate Cut" Reveals Recession Risks**

Written by Lance Roberts | Mar 6, 2020

In January we asked if this was going to be a repeat of 2018 as a strong start wound up wiping out all the gains. Well, we now know the answer. The question is what happens next, what should you do, and is the worst behind us.

[>> Read More](#)

If you need help or have questions, we are always glad to help. [Just email me.](#)

See You Next Week

By Lance Roberts, CIO

---

## Financial Planning Corner



### **#FPC: Tips For A Volatile Market**

Written by Lance Roberts | Mar 6, 2020

It seems like the sky is falling, it always does when we get into one of these environments, but fret not we've been here before. The question is what will you do different this time around?

[>> Read More](#)

You'll be hearing more about more specific strategies to diversify soon, but don't hesitate to [give me any suggestions or questions.](#)

by Danny Ratliff, CFP•

---

## Market & Sector Analysis

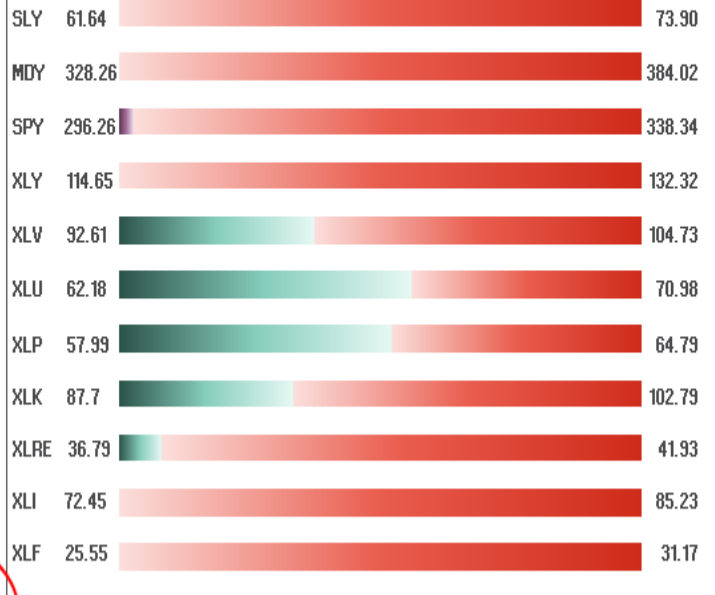
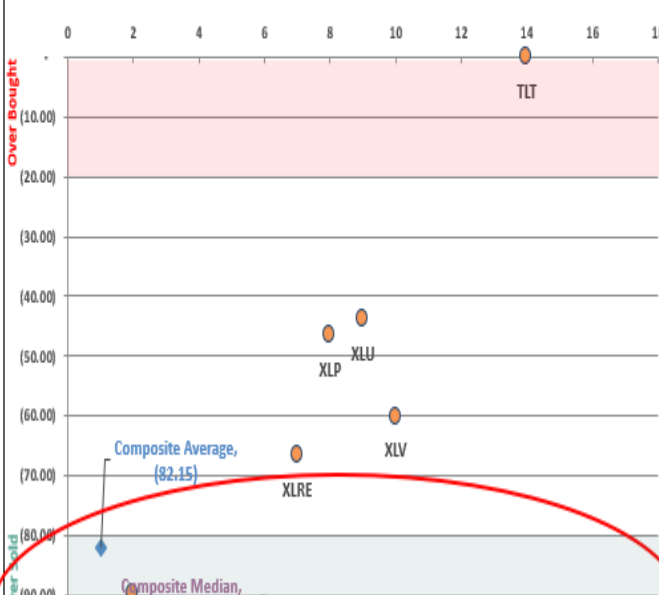
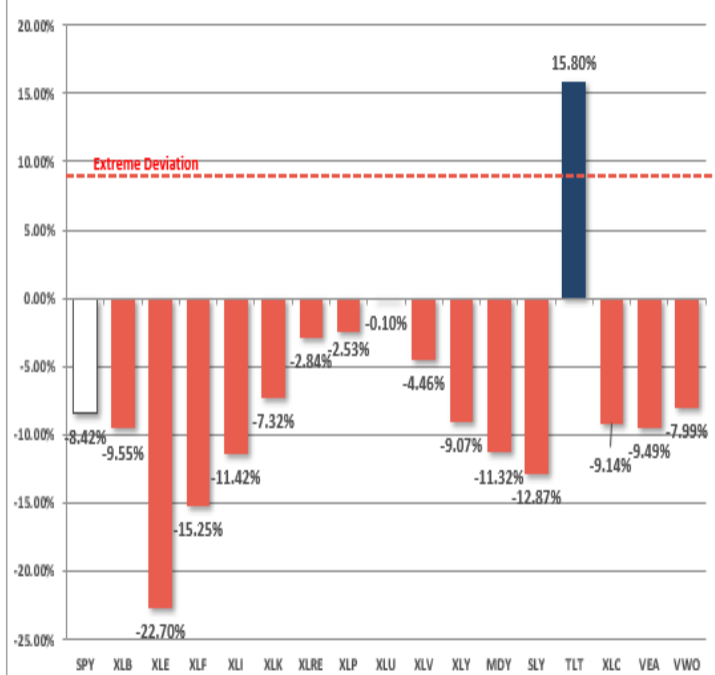
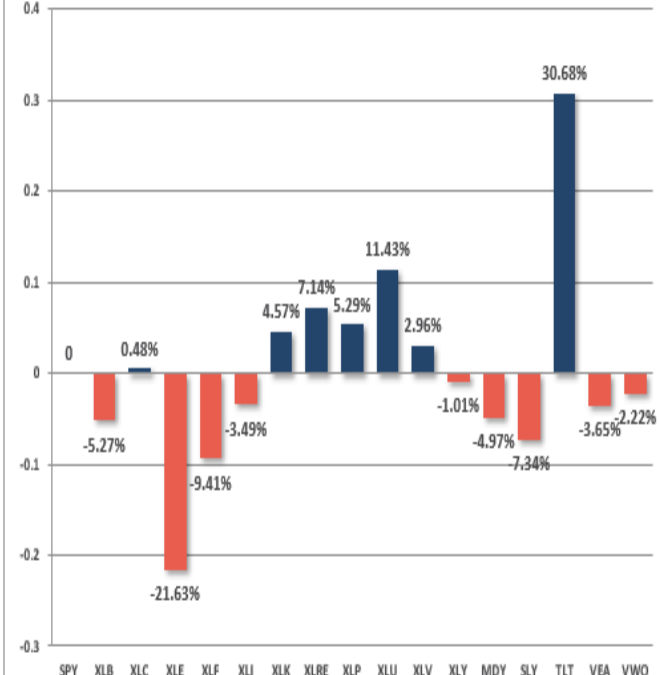
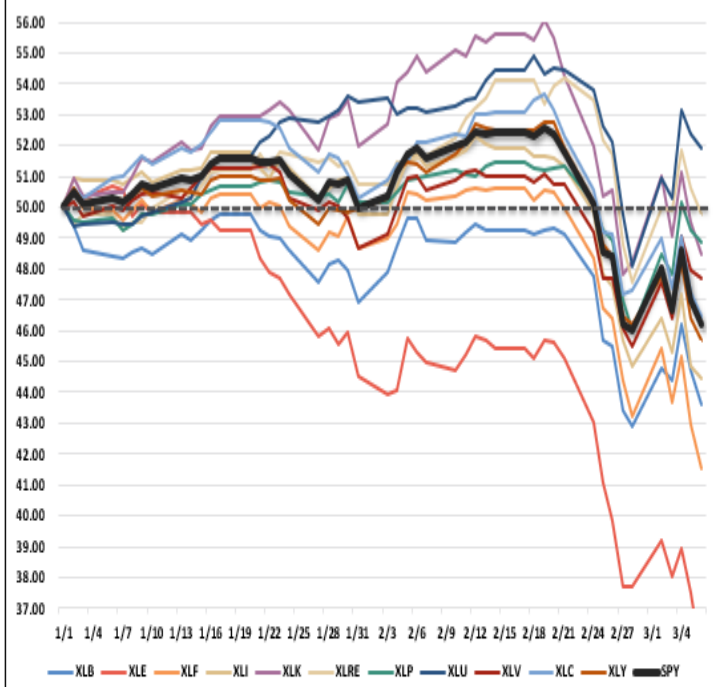
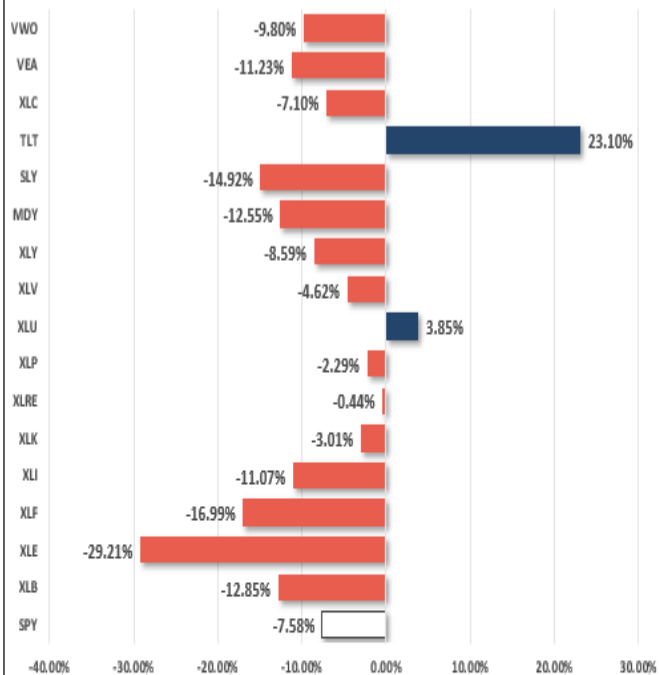
*Data Analysis Of The Market & Sectors For Traders*

---

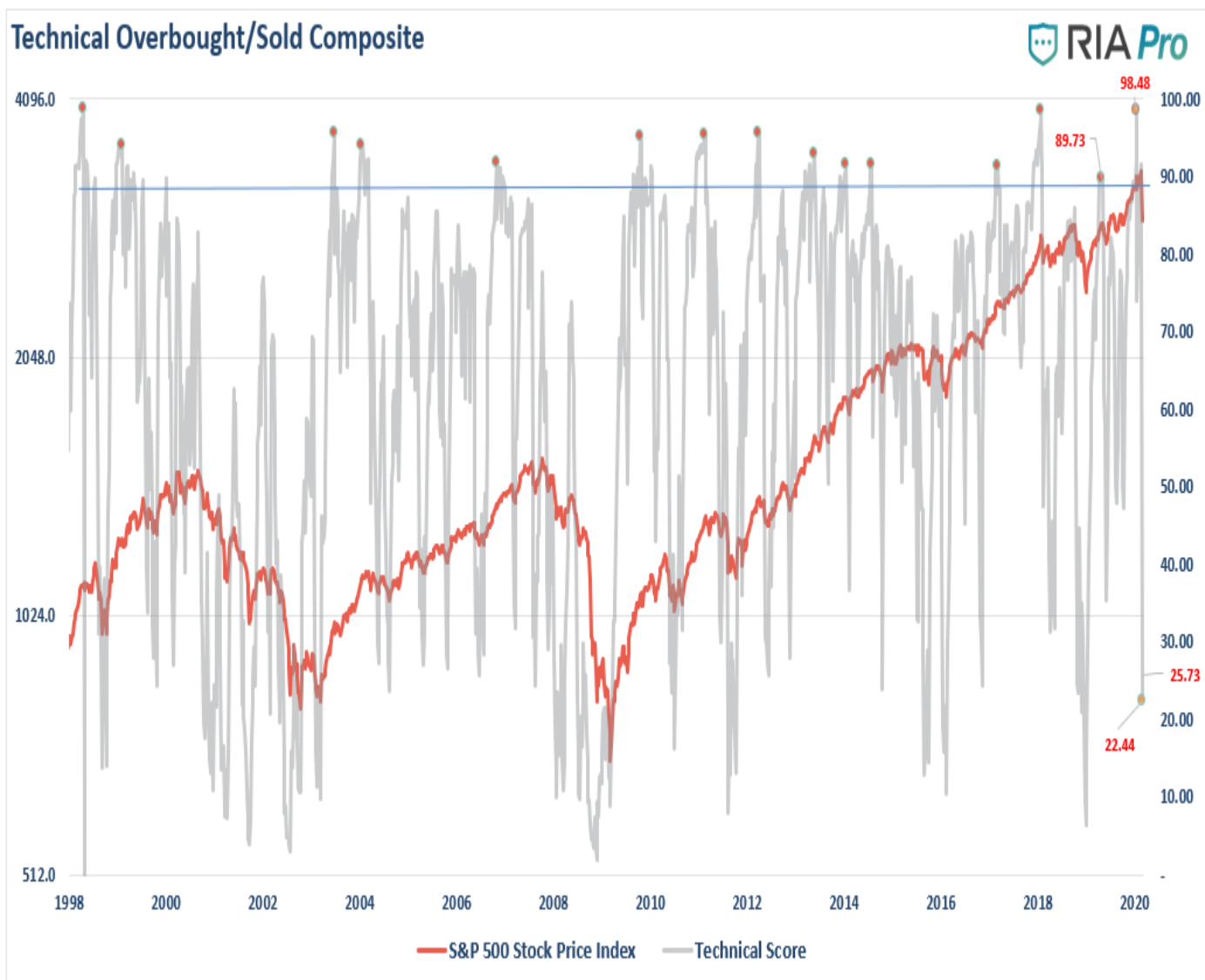
# S&P 500 Tear Sheet

3 Month SPY Price										SPY RISK INFO				ZACKS		REAL INVESTMENT ADVICE	
										Item	T 2-Yr	T 1-Yr.	YTD	% Diff YTD/T1-YR			
										Price Return	9.01%	7.26%	(7.58%)	(204.44%)			
										Max Drawdown	-20.47%	-15.79%	-15.79%	0.00%			
										Sharpe	0.36	0.67	(1.46)	(3.20)			
										Sortino	0.43	0.60	(1.77)	(3.94)			
										Volatility	15.80	15.55	25.80	0.66			
										Daily VaR-5%	(18.34)	(15.05)	(77.68)	4.16			
										Mnthly VaR-5%	(10.95)	10.92	10.92	0.00			
S&P 500 Fundamental Analysis										S&P 500 Market Cap Analysis							
Item	2 years ago	1 year ago	Current	1 Yr % Change	5 Year High	5 year Low	% From High	% From Low	Item	12-M Ago	Current	% Chg					
Dividend Yield	1.68%	1.93%	1.92%	(0.80%)	2.18%	1.68%	(12.11%)	14.52%	Shares	2,381.9	2,294.7	(3.66%)					
P/E Ratio	22.17	18.25	18.49	1.27%	2169%	1648%	(14.8%)	12.17%	Sales	63,054	64,456	2.22%					
P/S Ratio	3.58	3.12	3.20	2.36%	3.58	2.61	(10.54%)	22.74%	SPS	26.5	28.1	6.11%					
P/B Ratio	3.91	3.91	3.97	1.63%	4.32	3.01	(8.03%)	32.16%	Earnings	9,539	9,438	(1.06%)					
ROE	16.03%	18.81%	18.48%	(1.82%)	18.81%	15.04%	(1.78%)	22.86%	EPS TTM	4.8	4.9	0.99%					
ROA	3.00%	3.53%	3.51%	(0.58%)	3.53%	2.81%	(0.58%)	24.86%	Dividend	1.6	1.7	6.20%					
S&P 500 Asset Allocation																	
Sector	1 Year Price Return	Weight	Beta	P/E	P/E High- 5yr (Mo.)	P/E Low -5Yr (Mo.)	P/E % From Peak	ROE	DIV. YIELD	TTM Earnings Yield	Current Forward Earnings	Forward PE					
Energy	(34.73%)	3.42%	1.32	15.22	127.61	14.12	(88.1%)	6.2%	5.7%	7.56%	3.08	13.23					
Materials	(26.59%)	2.52%	1.22	16.15	22.97	13.86	(29.7%)	8.6%	2.1%	6.84%	3.64	15.91					
Industrials	(3.82%)	8.77%	1.17	16.42	22.27	14.78	(26.2%)	19.3%	2.1%	6.22%	5.09	15.61					
Discretionary	4.28%	9.75%	1.05	23.30	27.17	20.19	(14.2%)	27.8%	1.4%	4.41%	4.94	21.01					
Staples	13.45%	7.42%	0.62	20.84	22.83	17.62	(8.7%)	28.2%	2.7%	4.87%	4.05	18.49					
Health Care	6.87%	14.30%	0.87	16.61	20.18	15.78	(17.7%)	30.2%	1.8%	6.02%	6.95	14.65					
Financials	(1.41%)	11.98%	1.26	11.64	18.50	11.73	(37.0%)	11.3%	2.4%	8.54%	5.98	11.41					
Technology	26.71%	24.40%	1.21	23.82	24.10	14.48	(1.2%)	41.2%	1.4%	4.15%	5.71	20.99					
Telecom	1.80%	10.47%	0.85	20.50	27.01	17.61	(24.1%)	16.6%	0.9%	4.91%	6.78	17.93					
Utilities	18.45%	3.63%	0.42	21.39	21.40	15.58	(0.1%)	10.9%	3.1%	4.63%	3.75	18.79					
Real Estate	10.86%	3.16%	0.77	20.94	23.27	17.19	(10.0%)	9.1%	3.2%	4.82%	4.46	18.95					
Momentum Analysis																	
Item	Price	ROC 50-Days	50-DMA	# Days Since Cross	% Dev 50-Day	200-DMA	# Days Since Cross	% Dev 200-Day	% Dev 50-200 DMA	% From 52-W High	% From 52-W Low	Buy/Sell					
Large Cap	297.46	(7.87%)	324.86	50	(8.43%)	306.12	3	(2.83%)	6.12%	(12.27%)	9.19%	Buy					
Mid Cap	328.26	(12.55%)	370.05	20	(11.29%)	358.48	106	(8.43%)	3.23%	(14.62%)	2.46%	Buy					
Small Cap	61.64	(14.76%)	70.71	13	(12.83%)	68.58	104	(10.11%)	3.12%	(16.96%)	2.29%	Buy					

# Performance Analysis



# Technical Composite



# ETF Model Relative Performance Analysis

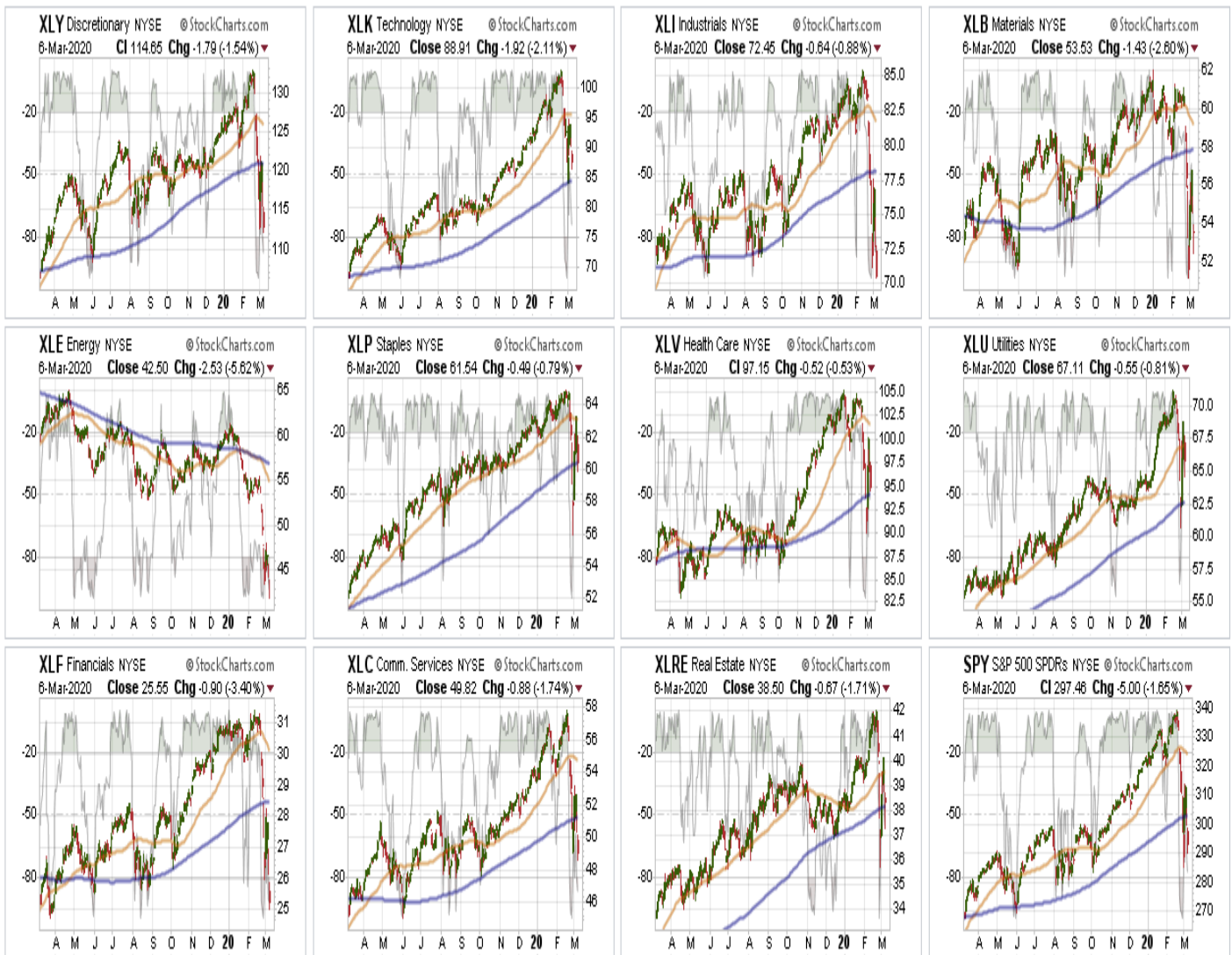
RIA Pro		RELATIVE PERFORMANCE		Current Price	Model Position Price Changes Relative to Index					SHORT WMA	LONG WMA	% DEV - Short M/A	% DEV - Long M/A	Buy / Sell Signal
		Ticker	ETF NAME		1 Week	4 Week	12 Weeks	24 Weeks	52 Weeks					
BENCHMARK		IVV	ISHARS-SP500	298.70	0.94	(10.50)	(6.39)	(0.84)	8.15	324.88	310.21	-8.06%	-3.71%	BUY
TACTICAL	SECTORS	XLB	SPDR-MATLS SELS	53.53	0.59	(0.42)	(5.05)	(7.41)	(10.34)	59.50	58.58	-10.04%	-8.62%	BUY
		XLE	SPDR-EGY SELS	42.50	(7.06)	(10.77)	(23.14)	(29.81)	(41.64)	56.28	58.22	-24.49%	-27.00%	SELL
		XLF	SPDR-FINL SELS	25.55	(4.85)	(6.87)	(10.42)	(8.17)	(9.76)	30.26	28.97	-15.56%	-11.82%	BUY
		XLI	SPDR-INDU SELS	72.45	(1.81)	(2.89)	(4.95)	(6.05)	(10.60)	81.73	79.35	-11.36%	-8.69%	BUY
		XLK	SPDR-TECH SELS	88.91	(0.33)	(0.31)	5.74	11.61	19.21	94.63	86.80	-6.05%	2.43%	BUY
		XLP	SPDR-CONS STPL	61.54	5.18	6.27	4.41	2.86	6.43	63.07	61.61	-2.43%	-0.11%	BUY
		XLU	SPDR-UTIL SELS	67.11	6.99	8.34	12.29	5.91	8.47	66.47	64.07	0.97%	4.75%	BUY
		XLC	SPDR-COMM SV SS	49.82	(2.79)	(0.31)	1.17	(0.88)	(0.24)	54.49	51.99	-8.58%	-4.17%	BUY
		XLV	SPDR-HLTH CR	97.15	3.96	4.79	2.69	6.43	0.52	101.70	96.06	-4.47%	1.14%	BUY
		XLY	SPDR-CONS DISCR	114.65	(1.96)	(0.14)	(0.53)	(3.93)	(2.39)	125.59	122.51	-8.71%	-6.41%	BUY
SIZE	SLY	SPDR-SP SC 600	61.64	(3.09)	(2.91)	(7.28)	(9.10)	(15.34)	71.04	68.95	-13.23%	-10.60%	BUY	
	MDY	SPDR-SP MC 400	328.26	(1.80)	(1.60)	(4.86)	(6.31)	(11.38)	370.68	359.99	-11.44%	-8.81%	BUY	
CORE	Equal Weight Market	RSP	INVS-SP5 EQ ETF	102.82	(1.57)	(1.38)	(3.45)	(4.73)	(7.24)	114.86	110.86	-10.48%	-7.25%	BUY
	Dividend	SDY	SPDR-SP DIV ETF	96.56	0.54	0.38	(3.40)	(4.43)	(8.74)	106.15	103.78	-9.03%	-6.96%	BUY
	Real Estate	XLRE	SPDR-RE SELS	38.50	3.71	6.90	8.81	(0.75)	2.42	39.28	38.91	-1.99%	-1.05%	BUY
	International	EEM	ISHARS-EMG MKT	40.13	(1.91)	3.05	(3.27)	(2.72)	(11.77)	43.93	42.54	-8.65%	-5.68%	BUY
		EFA	ISHARS-EAFE	61.75	(1.73)	0.05	(4.97)	(4.97)	(10.86)	68.35	66.59	-9.65%	-7.27%	BUY
IXUS	ISHARS-CR INT S	55.33	(1.68)	1.10	(4.18)	(4.14)	(10.60)	60.90	59.24	-9.15%	-6.60%	BUY		
FI	Intermediate Duration	TLT	ISHARS-20+YTB	166.77	6.44	25.97	26.33	18.37	29.03	142.62	141.02	16.93%	18.26%	BUY
	International	BNDX	VANGD-TTL INT B	58.40	(0.24)	12.05	6.90	0.39	(2.48)	57.41	58.01	1.73%	0.67%	SELL
	High Yield	HYG	ISHARS-IBX HYCB	85.05	(2.09)	7.18	3.47	(1.94)	(8.21)	87.73	87.17	-3.06%	-2.43%	BUY
	Cash	BSV	VANGD-SHT TRM B	82.51										

## Sector & Market Analysis:

*Be sure and catch our updates on Major Markets (Monday) and Major Sectors (Tuesday) with updated buy/stop/sell levels*

## Sector-by-Sector





Everything was crushed again this past week, so the difference between leading and lagging sectors is which sector fell faster or slower than the S&P 500 index itself.

### Improving ? Discretionary (XLY), Real Estate (XLRE), and Staples (XLP)

Last week, we rebalanced our weightings in Real Estate and Staples, as these sectors are now improving in terms of relative performance. After getting very beaten up, we are looking not only for the "risk hedge" of non-virus related sectors but an eventual outperformance of the groups.

We sold our entire stake in Discretionary due to potential earnings impacts from a slowdown in consumption, to supply chain problems, and inventory issues.

**Current Positions:** Target Weight XLU, XLRE

### Outperforming ? Technology (XLK), Communications (XLC), and Utilities (XLU)

The correction this past week found support at the 200-dma and we used that opportunity to bring our weightings in all three sectors back to target weights for now. These have "anti-virus" properties, so we are looking for the "risk hedge" relative to the broader market.

**Current Positions:** Target weight XLK, XLC, XLU

### Weakening ? Healthcare (XLV)

We did bring our healthcare positioning back to portfolio weight as the sector will ultimately benefit from a "cure" for the "coronavirus." Also, with Bernie Sanders now lagging Joe Biden on the Democratic ticket, this removes some of the risk of "nationalized healthcare" from the sector.

**Current Position:** Target weight ([XLV](#))

**Lagging ?** Industrials ([XLI](#)), Financials ([XLF](#)), Materials ([XLB](#)), and Energy ([XLE](#))

We had started to buy a little energy exposure previously, but closed out of the positions as we were stopped out of our holdings for now. We are going to continue to monitor the space due to its extreme oversold condition and relative value, and will re-enter our positions when stability starts to take hold.

We also sold Financials due to the financial risk from a recessionary impact on the outstanding corporate debt which currently exists. The Fed's rate cut also impacts the banks Net Interest Margins which makes them less attractive.

**Current Position:** None

## Market By Market



**Small-Cap ([SLY](#)) and Mid Cap ([MDY](#)) ?** Early last week we sold all small-cap and mid-cap exposure over concerns of the impact of the coronavirus. Remain out of these sectors for now.

**Current Position: None**

**Emerging, International ([EEM](#)) & Total International Markets ([EFA](#))**

Same as small-cap and mid-cap. Given the spread of the virus and the impact on the global supply chain.

**Current Position: None**

**Dividends ([VYM](#)), Market ([IVV](#)), and Equal Weight ([RSP](#)) ?** These positions are our long-term *core* positions for the portfolio given that over the long-term markets do rise with economic growth and inflation. We are currently maintaining our core positions unhedged for now. However, on a rally back to short-term resistance we will add hedges to the core.

**Current Position:** *RSP, VYM, IVV, VOO*

**Gold ([GLD](#)) ?** This past week, Gold continued its surge higher as stocks plunged lower. Gold is extremely overbought, so be patient for now and move stops up to the recent breakout levels. We sold our GDX position due to the fact mining is people-intensive and is located in countries most susceptible to the virus.

**Current Position:** *IAU (GOLD)*

**Bonds ([TLT](#)) ?**

Bonds also broke out to new highs as the correction ensued. On Friday, we took profits in our 20-year bond position (TLT) to reduce our duration slightly, raise cash, and take in some profits. Bonds are extremely overbought now, so be cautious, we are maintaining the rest of our exposures for now but will look to hedge if we begin to see a reversal in rates.

**Current Positions:** *DBLTX, SHY, IEF, PTIAX*

## **Sector / Market Recommendations**

The table below **shows thoughts on specific actions related to the current market environment.**

*(These are not recommendations or solicitations to take any action. This is for informational purposes only related to market extremes and contrarian positioning within portfolios. Use at your own risk and peril.)*

						OVERWEIGHT	BUY	HOLD	REDUCE	SELL	RIA Pro	Notes
		Over Bought / Sold	50/200 DMA	Trend	Action							
XLY	Discretionary	OS	Positive	Positive	Sold					X		No Position
XLK	Technology	OS	Positive	Positive	Hold		X					Brought To Target Weight
XLI	Industrials	OS	Positive	Positive	Sold					X		No Position
XLB	Materials	OS	Positive	Positive	Sold					X		No Position
XLE	Energy	OS	Negative	Negative	Sold					X		No Position
XLP	Staples	OS	Positive	Positive	Hold		X					Brought To Target Weight
XLV	Health Care	OS	Positive	Positive	Hold		X					Brought To Target Weight
XLU	Utilities	OS	Positive	Positive	Hold		X					Brought To Target Weight
XLF	Financials	OS	Positive	Positive	Sold					X		No Position
XLC	Communications	OS	Positive	Positive	Hold		X					Brought To Target Weight
XLRE	Real Estate	OS	Positive	Positive	Hold		X					Brought To Target Weight
SLY	Small Caps	OS	Positive	Positive	No Position					X		Sold Holdings
MDY	Mid Caps	OS	Positive	Positive	No Position					X		Sold Holdings
EEM	Emerging Mkt	OS	Positive	Positive	No Position					X		Sold Holdings
EFA	International	OS	Positive	Positive	No Position					X		Sold Holdings
IXUS	Total International	OS	Positive	Positive	No Position					X		Sold Holdings
GLD	Gold	OB	Positive	Positive	Hold		X					Very Overbought
RSP	SP500 Equal Wgt	OS	Positive	Positive	Hold		X					Hedge On Rally
SDY	SP500 Dividend	OS	Positive	Positive	Hold		X					Hedge On Rally
IVV	SP500 Market Wgt	OS	Positive	Positive	Hold		X					Hedge On Rally
TLT	20+ Yr. Bond	OB	Positive	Positive	Hold		X					New Highs
HYG	Corporate High Yield	Declining	Positive	Positive	Warning					X		Failed 200-DMA
BNDX	Int'l Bond Aggregate	OB	Positive	Positive	No Position					X		New Highs

LEGEND: X = THIS WEEK => PREVIOUS DECLINING <= PREVIOUS IMPROVING X No Position

## Portfolio/Client Update:

It's been a brutal couple of weeks.

This is when portfolio management gets extremely difficult. It is when we have the biggest urge to give in to our emotions. It is when Mike and I lose the most sleep.

Staying true to our discipline and strategy is difficult in times like these. We question everything, every day. Are we in the right place? Do we have too much risk? Are we missing something?

The ghosts of 2000, and 2008, stalk us both, and we are overly protective of YOUR money. We do not take our jobs lightly.

Again this past week, we made some additional changes to the portfolio composition to reduce risk away from the "COVID-19" virus. This rebalancing of risk lowered overall equity exposure, and continued to shift away from risk.

As noted last week, **we use WEEKLY signals in order to manage equity exposures** and make portfolio adjustments. Therefore, signals are ONLY VALID after the close of business on Friday. **Yesterday, we now have a CONFIRMED sell signal to reduce portfolio exposures to 75% of**

## our target allocations.

Fortunately, we are already there, and the hedges in our portfolios, along with bonds, are doing their jobs. We took some further actions to increase cash, and take some profits, and sell some of our laggards.

Be assured we are watching your portfolios very closely. **However, if you have ANY questions, comments, or concerns, please [don't hesitate to email me.](#)**

## Portfolio Actions Taken Last Week

- **New clients:** *Only adding new positions as needed.*
- **Dynamic Model:** *Sold all energy holdings RDS/A, AMLP.*
- **Equity Model:** *Sold all energy holdings RDS/A, AMLP, and XOM. We were too early on the trade and got stopped out. We will watch for a bottom to re-enter the positions. Sold DOV, VMC, JPM to reduce exposure to Fed rate cuts and virus areas.*
- **ETF Model:** *Sold XLB, XLI, AMLP, and XLF*

### **Note for new clients:**

**It is important to understand that when we add to our equity allocations, ALL purchases are initially *?trades?* that can, and will, be closed out quickly if they fail to work as anticipated.** This is why we *?step?* into positions initially. Once a *?trade?* begins to work as anticipated, it is then brought to the appropriate portfolio weight and becomes a long-term investment. **We will unwind these actions either by reducing, selling, or hedging if the market environment changes for the worse.**

---

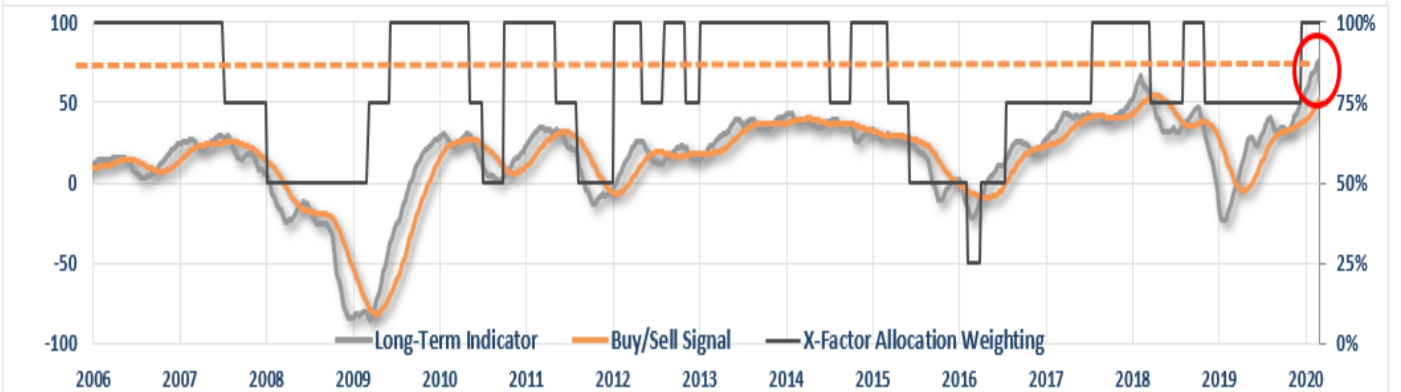
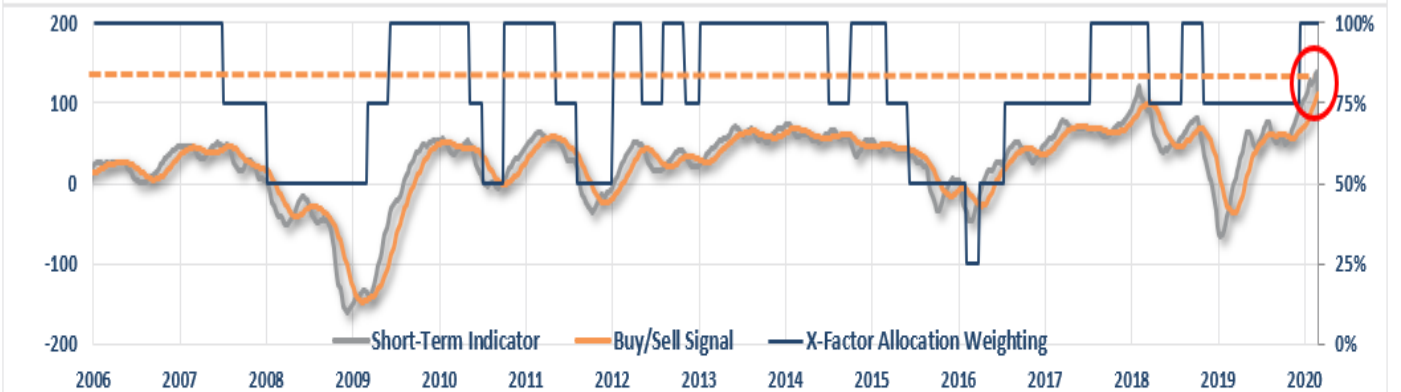
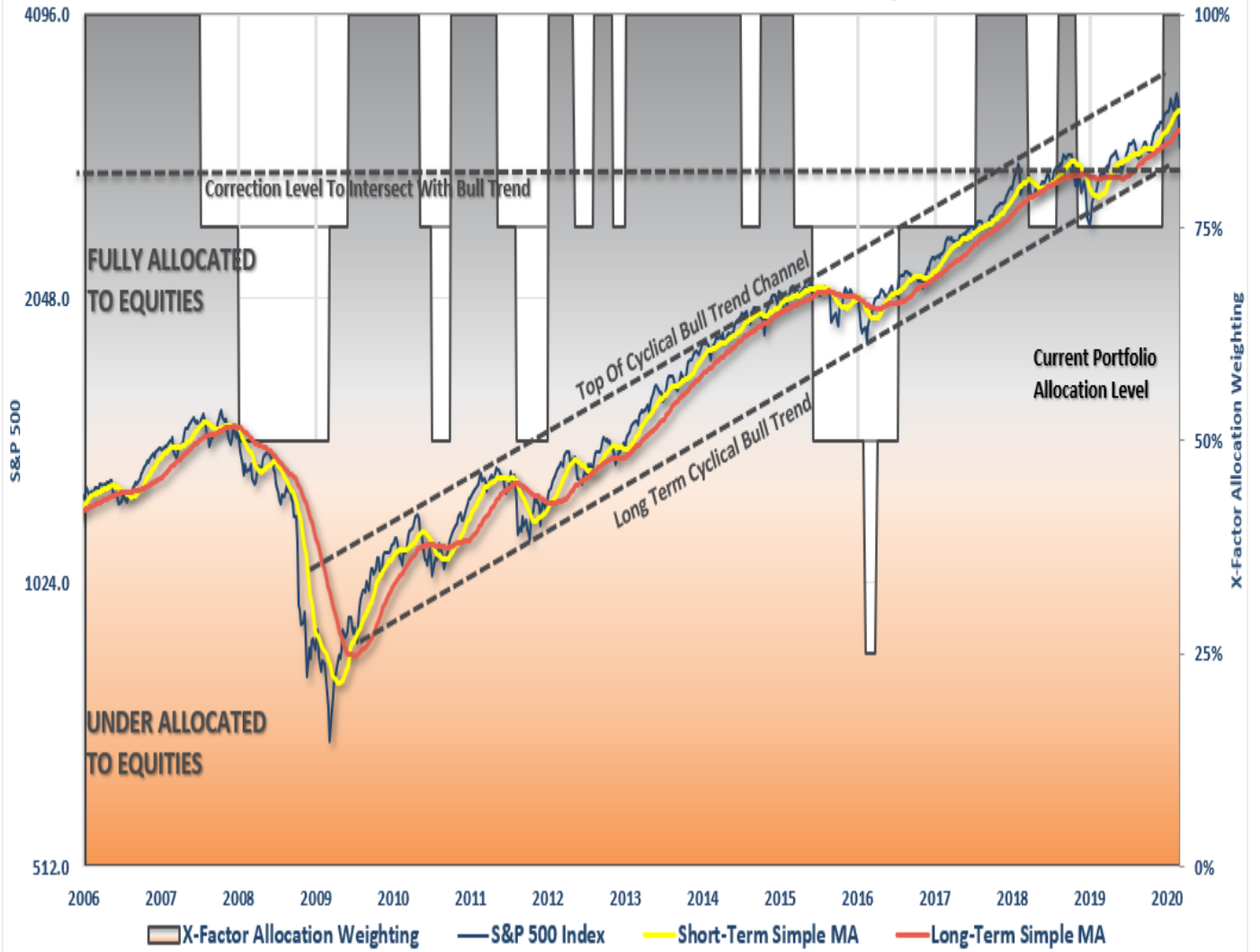
# THE REAL 401k PLAN MANAGER

## ***A Conservative Strategy For Long-Term Investors***

---

*The 401k plan allocation plan below follows the K.I.S.S. principle. By keeping the allocation simplified, it allows for better control of the allocation, and closer tracking to the benchmark objective over time. (If you want to make it more complicated, you can, however, statistics show simply adding more funds does not increase performance to any significant degree.)*

# Risk Management Analysis



If you need help after reading the alert; do not hesitate to [contact me](#).

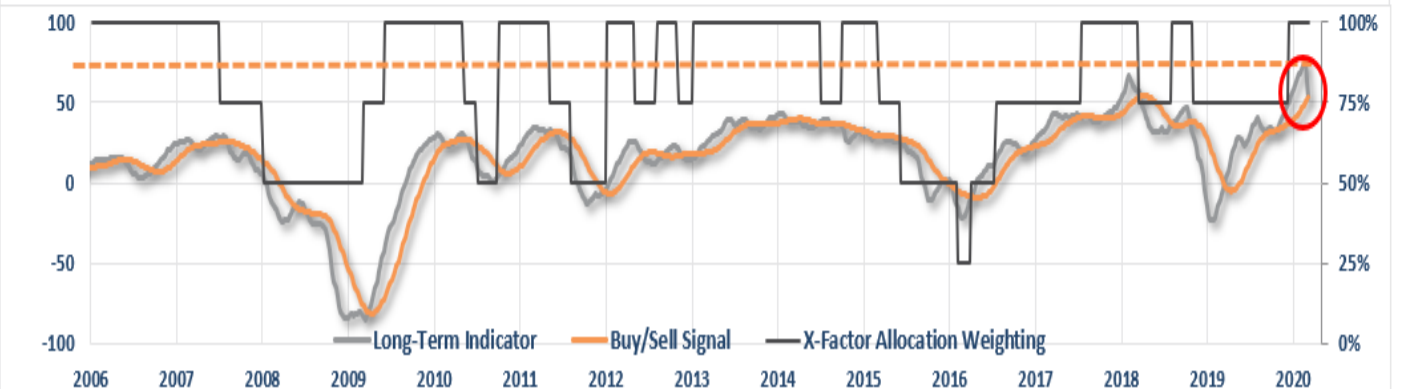
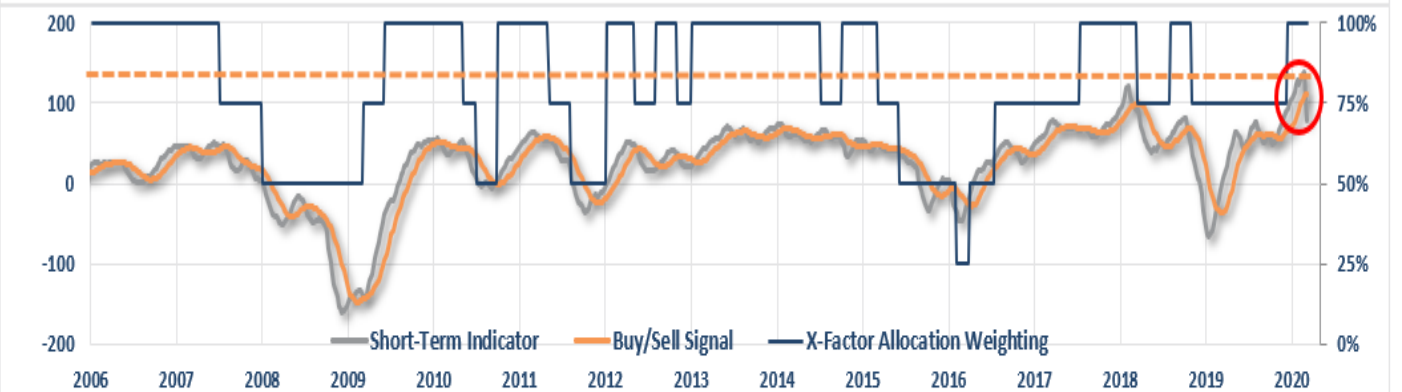
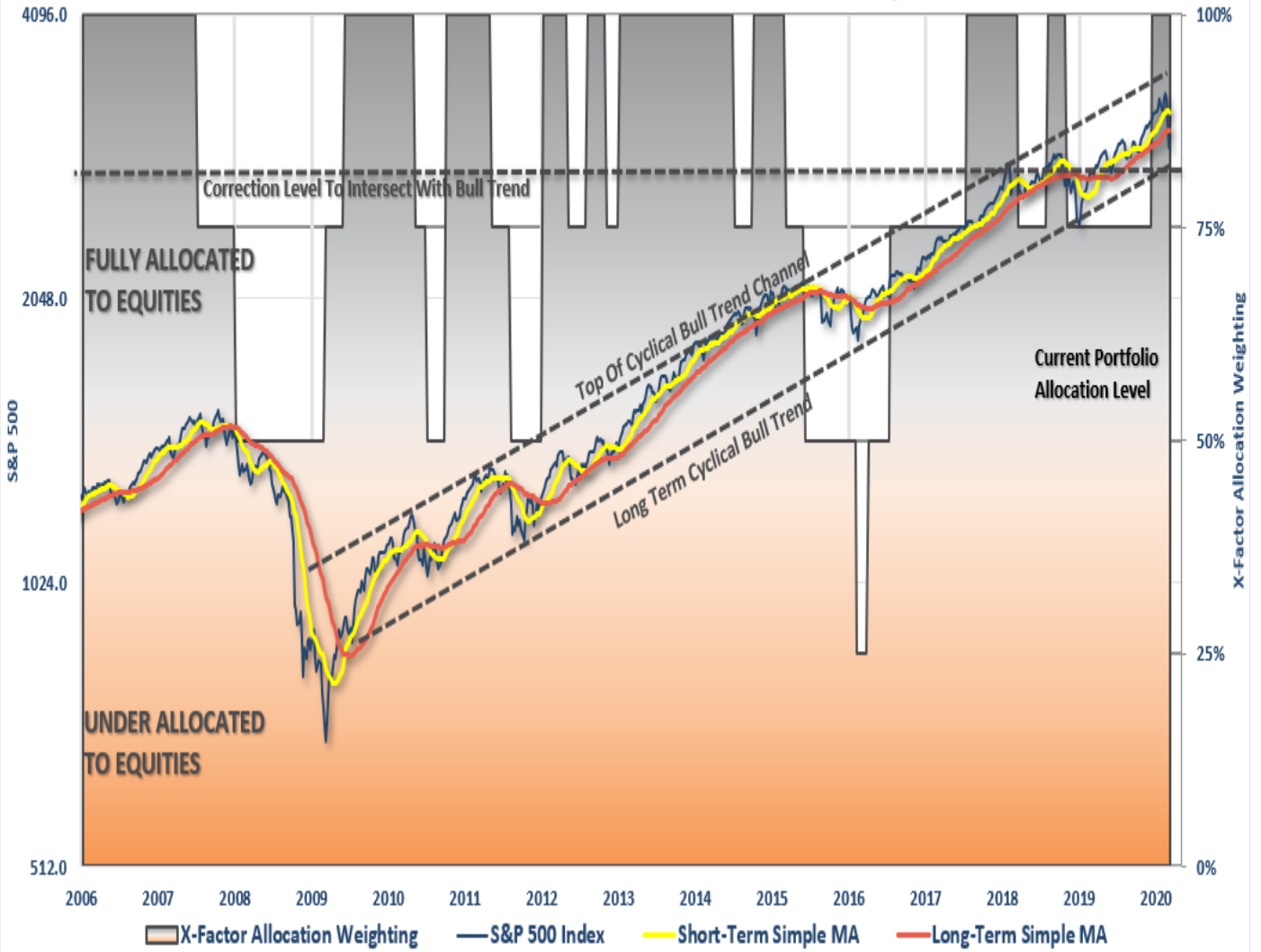
[Click Here For The "LIVE" Version Of The 401k Plan Manager](#)

See below for an example of a comparative model.

---

*Model performance is based on a two-asset model of stocks and bonds relative to the weighting changes made each week in the newsletter. This is strictly for informational and educational purposes only and should not be relied upon for any reason. Past performance is not a guarantee of future results. Use at your own risk and peril.*

# Risk Management Analysis



## Current Portfolio Weighting



## Current 401k Allocation Model

5.00% Cash + All Future Contributions



## ***401k Plan Manager Live Model***

As an [RIA PRO subscriber](#) (*You get your first 30-days free*) you have access to our live 401k p

**The code will give you access to the entire site during the 401k-BETA testing process**, so not only will you get to help us work out the bugs on the 401k plan manager, you can submit your comments about the rest of the site as well.

**We are building models specific to company plans. So, if you would like to see your company plan included specifically, [send me the following](#):**

- *Name of the company*
- *Plan Sponsor*
- *A print out of your plan choices. (Fund Symbol and Fund Name)*

**If you would like to offer our service to your employees at a deeply discounted corporate rate, [please contact me](#).**

This is the Beta version of 401K. Some Errors are expected ! [Click Here to report Issues](#)

My Portfolios

CVS Health ▾

Enter Portfolio Name

Add Portfolio

Delete Portfolio

Rename Portfolio

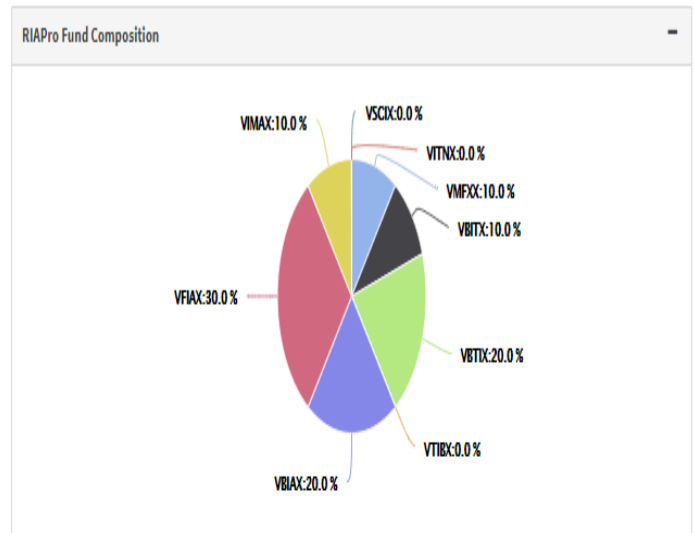
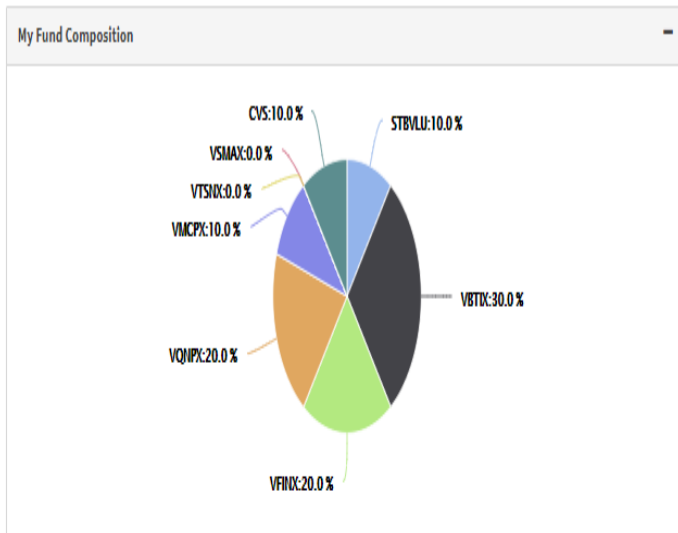
My Info Fund Selection Comparison Summary Commentary

My Portfolio

RIAPro Portfolio RIA PRO MODEL PL ▾

Retirement Income (My Portfolio Annual ROR 9.44 %)	
Current account balance	10,000
Estimated Retirement Balance	632,861
Estimated Retirement Balance (Inflation Adj)	620,204
Monthly Income	2,768
Monthly Income (Inflation Adj)	2,713
My Cumulative Contribution	172,934
Employer Cumulative Contribution	103,760

Retirement Income (RiaPro Annual ROR 9.02 %)	
Current account balance	10,000
Estimated Retirement Balance	609,786
Estimated Retirement Balance (Inflation Adj)	597,590
Monthly Income	2,667
Monthly Income (Inflation Adj)	2,614
My Cumulative Contribution	172,934
Employer Cumulative Contribution	103,760



My Asset Composition +

RIAPro Asset Composition +

